



*Operator's Manual
& Parts Drawings*

MJ840

Contour Mower





500 Venture Drive
Orrville Oh 44667
www.ventrac.com

View all manuals



Visit ventrac.com/manuals for the latest version of this operator's manual.

A downloadable parts manual is also available.

To the Owner Contact Information and Product Identification

If you need to contact an authorized Ventrac dealer for information on servicing your product, always provide the product model and serial numbers.

Please fill in the following information for future reference. See the picture(s) below to find the location of the identification numbers. Record them in the spaces provided.

Date of Purchase: _____

Dealer: _____

Dealer Address: _____

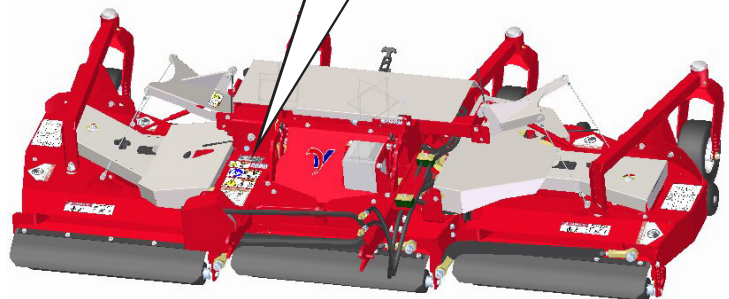
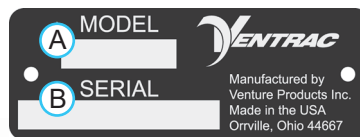
Dealer Phone Number: _____

Dealer Fax Number: _____

Model # (A): _____

Serial # (B): _____

Affix Part/Serial Number label here.



Venture Products Inc. reserves the right to make changes in design or specifications without obligation to make like changes on previously manufactured products.

TABLE OF CONTENTS

INTRODUCTION	PAGE 5
Product Description.....	5
Why Do I Need an Operator’s Manual?	5
Using Your Manual	6
Manual Glossary	6
SAFETY	PAGE 7
Safety Decals	7
General Safety Procedures	9
Training Required.....	9
Personal Protective Equipment Requirements	9
Operation Safety	9
Preventing Accidents.....	10
Keep Riders Off.....	10
Operating On Slopes.....	11
Roadway Safety	11
Truck Or Trailer Transport	11
Maintenance.....	12
Fuel Safety	12
Hydraulic Safety	13
MJ840 Safety Procedures.....	14
Cutting Unit Safety	14
OPERATIONAL CONTROLS	PAGE 15
Deck Pivot Latch	15
Primary S.D.L.A. Control Lever*	15
Secondary S.D.L.A. Control Lever*	15
Weight Transfer*	15
GENERAL OPERATION	PAGE 16
Daily Inspection.....	16
Attaching	16
Detaching	16
Mowing and Operating Procedure	16
Transport of Mower	16
Cutting Height Adjustment.....	17
Mower Front Wheel Path Adjustment.....	17
Anti-Scalp Roller Adjustment.....	17
Mulching Kit (Optional Accessory)	17

TABLE OF CONTENTS

SERVICE	PAGE 18
Cleaning and General Maintenance.....	18
Deck Flip-Up Procedure (Service Position).....	18
Mower Blade Inspection/Replacement.....	18
Mower Blade Sharpening.....	18
Drive Belt Inspection/Replacement.....	18
Drive Belt Tensioning Adjustments.....	19
Tire Pressure.....	19
Storage.....	19
Lubrication.....	20
Gearbox.....	20
Deck Leveling Procedure.....	21
Maintenance Schedule.....	23
Maintenance Checklist.....	24
SPECIFICATIONS	PAGE 25
Dimensions.....	25
PARTS	PAGE 26
Decks & Connector Links.....	26
Carrier Frame.....	28
Hitch Arms.....	30
Drive Shaft & Gearbox.....	32
Deck Belts (Serial # 1001-1447).....	34
Deck Belts (Serial # 1448-).....	36
Spindles.....	38
Shields.....	40
Front Anti-Scalp Rollers.....	42
Rear Rollers.....	44
Discharge Deflectors & Rear Belting.....	46
Deck Wing Lift Arms.....	48
Deck Wing Lift Arm Hydraulics.....	50
70.8087 Mulching Kit.....	52
WARRANTY	PAGE 54

INTRODUCTION



Venture Products Inc. is pleased to provide you with your new Ventrac contour mower! We hope that Ventrac equipment will provide you with a ONE Tractor Solution.

Listed below are just some of the items that can provide you *versatility* as you use your MJ840 contour mower. Please visit our web site, or contact your authorized Ventrac dealer for a complete list of items available for your new contour mower.

Accessories	Item Description	Part Number
	MJ840 Mulching Kit	70.8087

Product Description

The MJ840 is designed for the sole purpose of finish mowing. The MJ840 features an 83" (211 cm) cutting width with full rear rollers for even cutting and striping, rear discharge, and a flip-up deck design. The MJ840 features three independently floating decks that follow the contour of the terrain with up to 40 degrees of motion for each side deck.

Why Do I Need an Operator's Manual?

This manual has been created to help you gain the important knowledge of what is needed to safely operate, maintain, and service your machine. It is divided into sections for convenient reference of the appropriate section.

You must read and understand the operator's manual for each piece of Ventrac equipment you own. Reading the operator's manual will help you become familiar with each specific piece of equipment. Understanding the operator's manual will help you, as well as others, avoid personal injury and/or damage to the equipment. Keep this manual with the machine at all times. The manual should remain with the machine even if it is sold. If this manual becomes damaged or unreadable, it should be replaced immediately. Contact your local Ventrac dealer for a replacement.

When using a Ventrac attachment, be sure to read and follow the safety and operating instructions of both the power unit and the attachment being used to ensure the safest operation possible.

The information in this manual provides the operator with the safest procedures to operate the machine while getting the maximum use out of the unit. Failure to follow the safety precautions listed in this manual may result in personal injury and/or damage to the equipment.

INTRODUCTION

Using Your Manual

Throughout this manual, you will encounter special messages and symbols that identify potential safety concerns to help you as well as others avoid personal injury or damage to the equipment.

SYMBOL DEFINITIONS



ATTENTION

This symbol identifies potential health and safety hazards. It marks safety precautions. Your safety and the safety of others is involved.

There are three signal words that describe the level of safety concern: Danger, Warning, and Caution. Safety should always be the #1 priority when working on or operating equipment. Accidents are more likely to occur when proper operating procedures are not followed or inexperienced operators are involved.

Note: Right-Hand and Left-Hand orientations may be referred to at different places throughout this manual. Right-Hand and Left-Hand is determined as if sitting on the power unit seat facing forward.

SIGNAL WORD DEFINITIONS

⚠ DANGER

Indicates an imminently hazardous situation which, if not avoided, will result in death or serious injury. This signal word is limited to the most extreme cases.

⚠ WARNING

Indicates a potentially hazardous situation which, if not avoided, could result in death or serious injury.

⚠ CAUTION

Indicates a potentially hazardous situation which, if not avoided, may result in minor or moderate injury and/or property damage. It may also be used to alert against unsafe practices.

Manual Glossary

Power Unit A Ventrac tractor or other Ventrac engine powered device that may be operated by itself or with an attachment or accessory.

Attachment A piece of Ventrac equipment that requires a Power Unit for operation.

Accessory A device that attaches to a Power Unit or Attachment to extend its capabilities.

Machine Describes any "Attachment" or "Accessory" that is used in conjunction with a power unit.

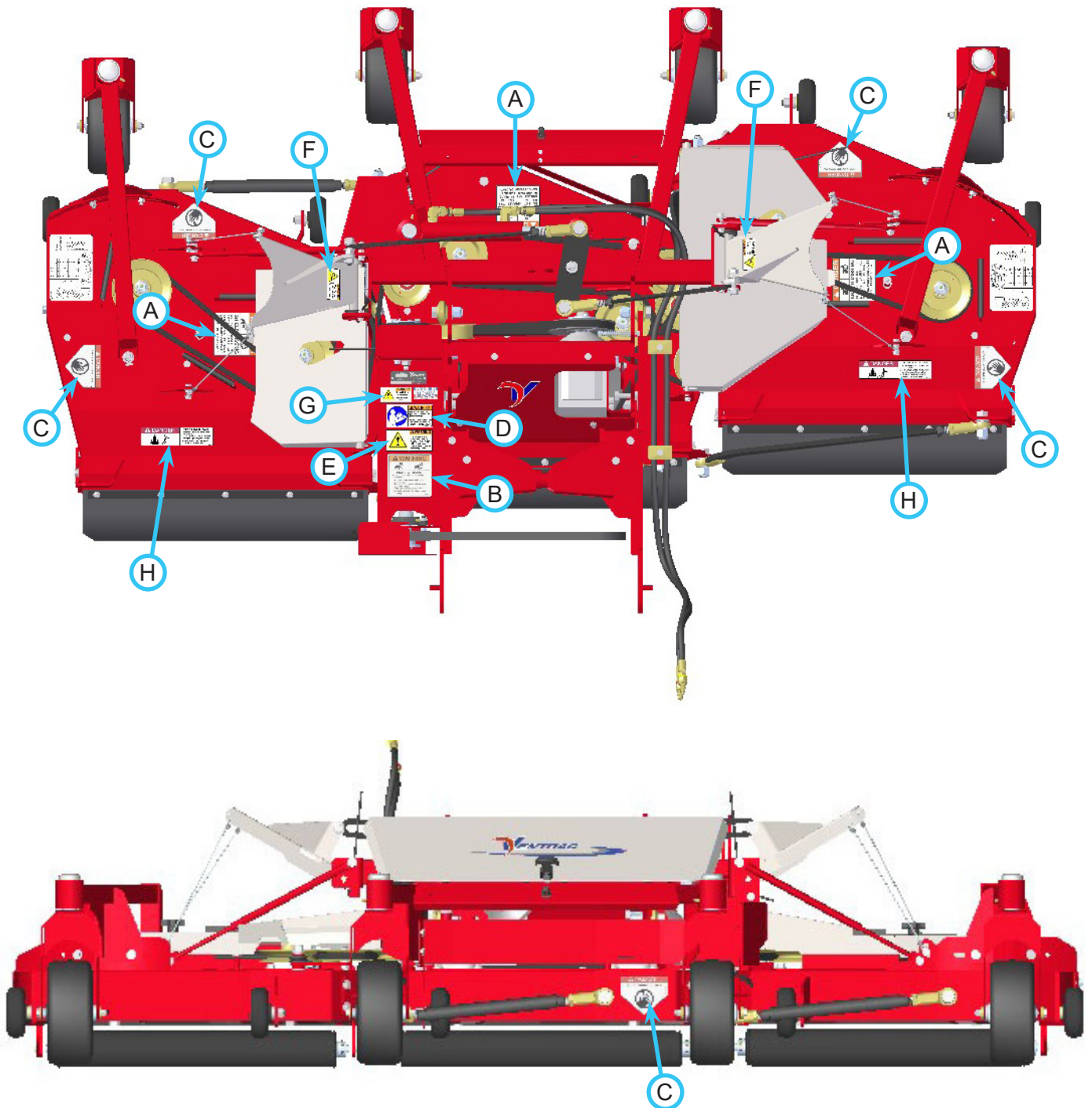
SAFETY

Safety Decals

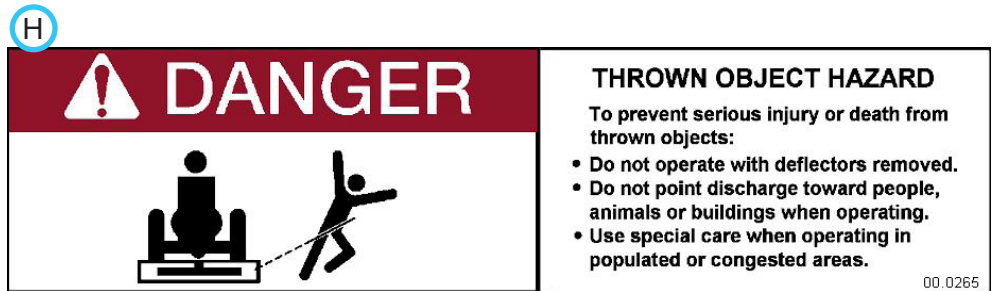
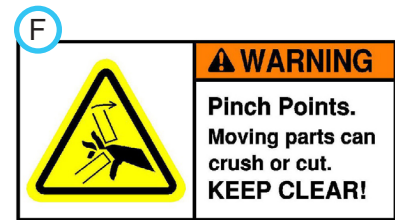
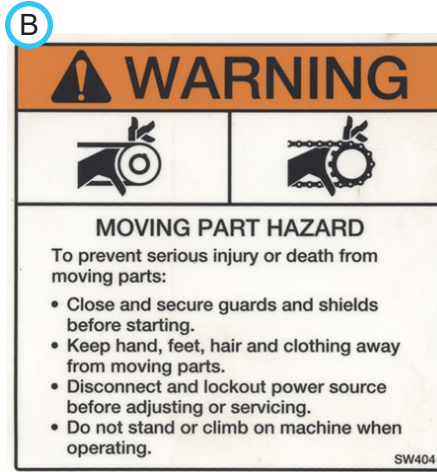
The following safety decals must be maintained on your MJ840 contour deck.

Keep all safety decals legible. Remove all grease dirt, and debris from safety decals and instructional labels. If any decals are faded, illegible, or missing, contact your dealer promptly for replacements.

When new components are installed, be sure that current safety decals are affixed to the replacement components.



SAFETY



Decal	Description	Part Number	Quantity
A	Danger, Shield Missing	00.0062	3
B	Warning - Moving Part Hazard	00.0101	1
C	Danger - Keep Hands & Feet Away	00.0123	5
D	Warning, Read Owner's Manual	00.0217	1
E	Warning - General Safety	00.0220	1
F	Warning - Pinch Point	00.0218	2
G	Warning - Do Not Reach	00.0219	1
H	Danger - Thrown Object Hazard	00.0265	2

SAFETY



General Safety Procedures for Ventrac Power Units, Attachments, & Accessories



Training Required

- The owner of this machine is solely responsible for properly training the operators.
- The owner/operator is solely responsible for the operation of this machine and prevention of accidents or injuries occurring to him/herself, other people, or property.
- Do not allow operation or service by children or untrained personnel. Local regulations may restrict the age of the operator.
- Before operating this machine, read the operator's manual and understand its contents.
- If the operator of the machine cannot understand this manual, then it is the responsibility of this machine's owner to fully explain the material within this manual to the operator.
- Learn and understand the use of all controls.
- Know how to stop the power unit and all attachments quickly in the event of an emergency.



Personal Protective Equipment Requirements

It is the responsibility of the owner to be sure that the operators use the proper personal protective equipment while operating the machine. Required personal protective equipment includes, but is not limited to, the following list.



- Wear a certified ear protection device to prevent loss of hearing.
- Prevent eye injury by wearing safety glasses while operating the machine.
- Closed toe shoes must be worn at all times.
- Long pants must be worn at all times.
- When operating in dusty conditions, it is recommended that a dust mask be worn.

Operation Safety

- Inspect machine before operation. Repair or replace any damaged, worn, or missing parts. Be sure guards and shields are in proper working condition and are secured in place. Make all necessary adjustments before operating machine.
- Some pictures in this manual may show shields or covers opened or removed in order to clearly illustrate any instructions. Under no circumstance should the machine be operated without these devices in place.
- Alterations or modifications to this machine can reduce safety and could cause damage to the machine. Do not alter safety devices or operate with shields or covers removed.
- Before each use, verify that all controls function properly and inspect all safety devices. Do not operate if controls or safety devices are not in proper working condition.
- Check parking brake function before operating. Repair or adjust parking brake if necessary.
- Observe and follow all safety decals.
- All controls are to be operated from the operator's station only.
- Always wear a seat belt if the machine has a roll cage/bar installed and in upright position.
- Ensure the attachment or accessory is locked or fastened securely to the power unit before operating.
- Ensure that all bystanders are clear of the power unit and attachment before operating. Stop machine if someone enters your work area.
- Always be alert to what is happening around you, but do not lose focus on the task you are performing. Always look in the direction the machine is moving.
- Look behind and down before backing up to be sure of a clear path.
- If you hit an object, stop and inspect the machine. Make all necessary repairs before operating machine again.
- Stop operation immediately at any sign of equipment failure. An unusual noise can be a warning of equipment failure or a sign that maintenance is required. Make all necessary repairs before operating machine again.

SAFETY



General Safety Procedures for Ventrac Power Units, Attachments, & Accessories



Operation Safety (continued)

- If equipped with a high/low range feature, never shift between high and low range while on a slope. Always move the machine to level ground and engage the parking brake before shifting range.
- Do not leave machine unattended while it is running.
- Always park the machine on level ground.
- Always shut off engine when connecting attachment drive belt to the power unit.
- Never leave the operator's station without lowering the attachment to the ground, setting the parking brake, shutting off the engine, and removing the ignition key. Make sure all moving parts have come to a complete stop before dismounting.
- Never leave equipment unattended without lowering the attachment to the ground, setting the parking brake, shutting off the engine, and removing the ignition key.
- Only operate in well-lit conditions.
- Do not operate when there is a risk of lightning.
- Never direct the discharge of any attachment in the direction of people, buildings, animals, vehicles, or other objects of value.
- Never discharge material against a wall or obstruction. Material may ricochet back towards the operator.
- Use extra caution when approaching blind corners, shrubs, trees, or other objects that may obscure vision.
- Do not run the engine in a building without adequate ventilation.
- Do not touch the engine or the muffler while the engine is running or immediately after stopping the engine. These areas may be hot enough to cause a burn.
- Do not change the engine governor settings or over-speed the engine. Operating engine at excessive speed may increase the hazard of personal injury.
- To reduce the hazard of fire, keep the battery compartment, engine, and muffler areas free of grass, leaves, excessive grease, and other flammable materials.

Preventing Accidents

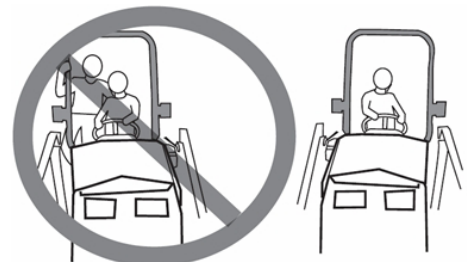


- Clear working area of objects that might be hit or thrown from machine.
- Keep people and pets out of working area.
- Know the work area well before operation. Do not operate where traction or stability is questionable.
- Reduce speed when you are operating over rough ground.
- Equipment can cause serious injury and/or death when improperly used. Before operating, know and understand the operation and safety of the power unit and the attachment being used.

- Do not operate machine if you are not in good physical and mental health, if you will be distracted by personal devices, or are under the influence of any substance which might impair decision, dexterity, or judgment.
- Children are attracted to machine activity. Be aware of children and do not allow them in the working area. Turn off the machine if a child enters the work area.

Keep Riders Off

- Only allow the operator on the power unit. Keep riders off.
- Never allow riders on any attachment or accessory.



SAFETY

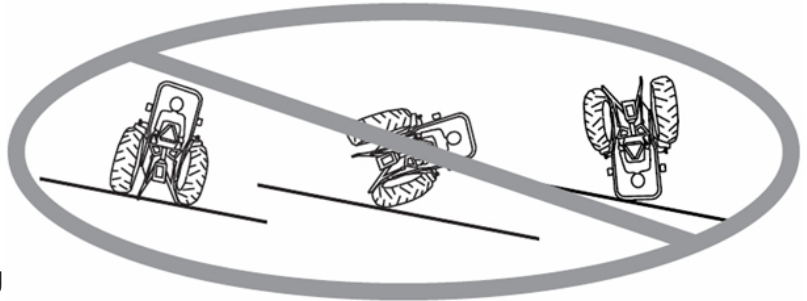


General Safety Procedures for Ventrac Power Units, Attachments, & Accessories



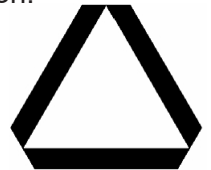
Operating On Slopes

- Slopes can cause loss-of-control and tip-over accidents, which can result in severe injury or death. Be familiar with the emergency parking brake, along with the power unit controls and their functions.
- If power unit is equipped with a fold down roll bar, it must be locked in the upright position when operating on any slope.
- Use low range (if equipped) when operating on slopes greater than 15 degrees.
- Do not stop or start suddenly when operating on slopes.
- Never shift between high and low range while on a slope. Always move the power unit to level ground and engage the parking brake before shifting range or placing the power unit in neutral.
- Variables such as wet surface and loose ground will reduce the degree of safety. Do not drive where machine could lose traction or tip over.
- Keep alert for hidden hazards in the terrain.
- Stay away from drop-offs, ditches, and embankments.
- Sharp turns should be avoided when operating on slopes.
- Pulling loads on hills decreases safety. It is the responsibility of the owner/operator to determine loads that can safely be controlled on slopes.
- Transport machine with attachment lowered or close to the ground to improve stability.
- While operating on slopes, drive in an up and down direction when possible. If turning is necessary while driving across slopes, reduce speed and turn slowly in the downhill direction.
- Assure a sufficient supply of fuel for continuous operation. A minimum of one-half tank of fuel is recommended.



Roadway Safety

- Operate with safety lights when operating on or near roadways.
- Obey all state and local laws concerning operation on roadways.
- Slow down and be careful of traffic when operating near or crossing roadways. Stop before crossing roads or sidewalks. Use care when approaching areas or objects that may obscure vision.
- If there is doubt of safety conditions, discontinue machine operation until a time when operation can be performed safely.
- When operating near or on roadways, have a Slow Moving Vehicle Emblem clearly displayed.



Truck Or Trailer Transport

- Use care when loading or unloading machine into a truck or trailer.
- Use full width ramps for loading machine into a truck or trailer.
- The parking brake is not sufficient to lock the machine during transport. Always secure the power unit and/or attachment to the transporting vehicle securely using straps, chains, cable, or ropes. Both front and rear straps should be directed down and outward from the machine.
- Shut off fuel supply to power unit during transport on truck or trailer.
- If equipped, turn the battery disconnect switch to the Off position to shut off electrical power.

SAFETY



General Safety Procedures for Ventrac Power Units, Attachments, & Accessories



Maintenance

- Keep all safety decals legible. Remove all grease dirt, and debris from safety decals and instructional labels.
- If any decals are faded, illegible, or missing, contact your dealer promptly for replacements.
- When new components are installed, be sure that current safety decals are affixed to the replacement components.
- If any component requires replacement, use only original Ventrac replacement parts.
- Always turn the battery disconnect to the Off position or disconnect the battery before performing any repairs. Disconnect the negative terminal first and the positive terminal last. Reconnect the positive terminal first and the negative terminal last.
- Keep all bolts, nuts, screws, and other fasteners properly tightened.
- Always lower the attachment to the ground, engage parking brake, shut off engine, and remove the ignition key. Make sure all moving parts have come to a complete stop before cleaning, inspection, adjusting or repairing.
- If the power unit, attachment, or accessory requires repairs or adjustments not instructed in the operator's manual, the power unit, attachment, or accessory must be taken to an authorized Ventrac dealer for service.
- Never perform maintenance on the power unit and/or attachment if someone is in the operator's station.
- Always use protective glasses when handling the battery.
- Check all fuel lines for tightness and wear on a regular basis. Tighten or repair them as needed.
- To reduce the hazard of fire, keep the battery compartment, engine, and muffler areas free of grass, leaves, and excessive grease.
- Do not touch the engine, the muffler, or other exhaust components while the engine is running or immediately after stopping the engine. These areas may be hot enough to cause a burn.
- Allow the engine to cool before storing and do not store near an open flame.
- Do not change the engine governor settings or over-speed the engine. Operating engine at excessive speed may increase the hazard of personal injury.
- Springs may contain stored energy. Use caution when disengaging or removing springs and/or spring loaded components.
- An obstruction or blockage in a drive system or moving/rotating parts may cause a buildup of stored energy. When the obstruction or blockage is removed, the drive system or moving/rotating parts may move suddenly. Do not attempt to remove an obstruction or blockage with your hands. Keep hands, feet, and clothing away from all power-driven parts.
- Dispose of all fluids in accordance with local laws.

Fuel Safety



- To avoid personal injury or property damage, use extreme care in handling gasoline. Gasoline is extremely flammable and the vapors are explosive.
- Do not refuel machine while smoking or at a location near flames or sparks.
- Always refuel the machine outdoors.
- Do not store machine or fuel container indoors where fumes or fuel can reach an open flame, spark, or pilot light.
- Only store fuel in an approved container. Keep out of reach of children.
- Never fill containers inside a vehicle or on a truck or trailer bed with a plastic liner. Always place containers on the ground away from your vehicle before filling.
- Remove machine from the truck or trailer and refuel it on the ground. If this is not possible, refuel the machine using a portable container, rather than from a fuel dispenser nozzle.
- Never remove fuel cap or add fuel with the engine running. Allow engine to cool before refueling.
- Never remove fuel cap while on a slope. Only remove when parked on a level surface.
- Replace all fuel tank and container caps securely.

SAFETY



General Safety Procedures for Ventrac Power Units, Attachments, & Accessories



Fuel Safety (continued)

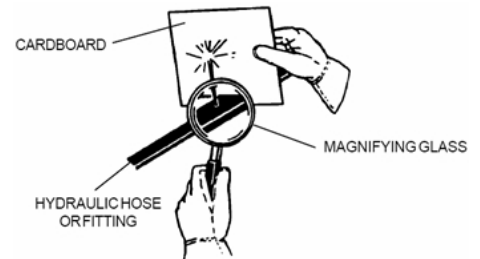
- Do not overfill fuel tank. Only fill to bottom of fuel neck, do not fill fuel neck full. Overfilling of fuel tank could result in engine flooding, fuel leakage from the tank, and/or damage to the emissions control system.
- If fuel is spilled, do not attempt to start the engine. Move the power unit away from the fuel spill and avoid creating any source of ignition until fuel vapors have dissipated.
- If the fuel tank must be drained, it should be drained outdoors into an approved container.
- Dispose of all fluids in accordance with local laws.
- Check all fuel lines for tightness and wear on a regular basis. Tighten or repair them as needed.
- The fuel system is equipped with a shut-off valve. Shut off the fuel when transporting the machine to and from the job, when parking the machine indoors, or when servicing the fuel system.

Hydraulic Safety

- Make sure all hydraulic connections are tight and all hydraulic hoses and tubes are in good condition. Repair any leaks and replace any damaged or deteriorated hoses or tubes before starting the machine.
- Hydraulic leaks can occur under high pressure. Hydraulic leaks require special care and attention.
- Use a piece of cardboard and a magnifying glass to locate suspected hydraulic leaks.



- Keep body and hands away from pinhole leaks or nozzles that eject high pressure hydraulic fluid. Hydraulic fluid escaping under high pressure can penetrate the skin causing serious injury, leading to severe complications and/or secondary infections if left untreated. If hydraulic fluid is injected into the skin, seek immediate medical attention no matter how minor the injury appears.



- Hydraulic system may contain stored energy. Before performing maintenance or repairs on the hydraulic system, remove attachments, engage parking brake, disengage weight transfer system (if equipped), shut off engine, and remove ignition key. To relieve pressure on the auxiliary hydraulic system, shut off the power unit engine and move the hydraulic control lever left and right before disconnecting the auxiliary hydraulic quick couplers.
- Dispose of all fluids in accordance with local laws.

SAFETY



MJ840 Safety Procedures



- Attachment hydraulic system may contain stored energy. Before performing maintenance or repairs on the hydraulic system, the attachment's auxiliary hydraulic hoses must be disconnected from the power unit. Lower the attachment to the ground, shut off power unit engine, move the secondary S.D.L.A. lever left and right to relieve auxiliary hydraulic pressure, and disconnect the auxiliary hydraulic quick couplers.

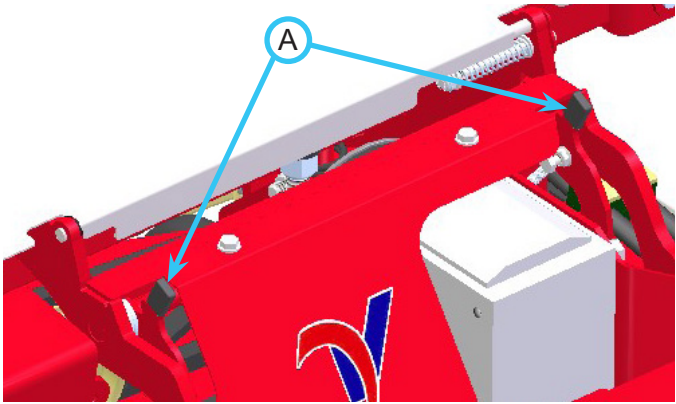
Cutting Unit Safety

- Rotating Blades: Contact with the rotating mower blades or other moving parts may cause personal injury. Keep hands and feet away.
- Rotation of one blade may cause another blade to rotate.
- Thrown Object Hazard: Do not point discharge toward people, animals, or buildings when operating. Never operate with the deflectors removed.
- When not mowing, always shut off the PTO to stop the mower blades.
- Never raise the mower deck with the blades running.



OPERATIONAL CONTROLS

Deck Pivot Latch



The deck pivot latch (A) performs two functions:

1. It enables the deck to pivot throughout the range of the operating position.
2. It locks the deck in the upright service position for service and maintenance.

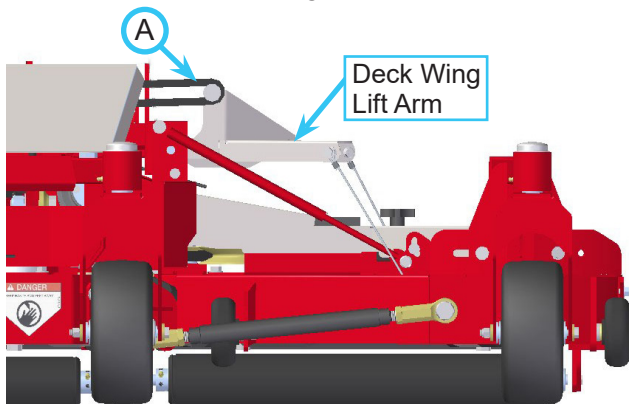
Refer to “Deck Flip-Up Procedure” in the service section of this manual for use of the deck pivot latch.

Primary S.D.L.A. Control Lever*

Pull the lever to the left to raise the tractor front hitch and MJ840 mower. Push the lever to the right to lower the tractor front hitch and MJ840 mower. The control lever must be in the float (detent) position during operation of the mower.

Secondary S.D.L.A. Control Lever*

Pull the lever to the left to raise the left and right mower deck lift arms. Push the lever to the right to lower the right and left mower deck lift arms. If operation is not as described, the hoses are not connected to the correct quick coupler. Disconnect the hoses and reconnect each hose to the other quick coupler. When mowing, fully extend the lift arm control links (A) to allow for maximum up and down motion of the left and right mower decks.



Weight Transfer*

Terrain and ground conditions may affect the appropriate setting for the tractor’s weight transfer system. In most cases, the weight transfer system should be set from 1/2 to 3/4 of maximum capacity.

* Refer to tractor owner’s manual for operation of tractor controls.

GENERAL OPERATION

Daily Inspection

⚠ WARNING

Always set the parking brake, shut off the tractor engine, remove the ignition key, and ensure all moving parts have stopped before checking mower deck or blade condition, or attempting any repair or adjustment.

1. Park tractor and contour mower on a level surface, with the engine shut off and all fluids cold.
2. Perform a visual inspection of the tractor and mower. Look for loose or missing hardware, damaged components, or signs of wear. Inspect hydraulic hoses, hydraulic fittings, and fuel lines to ensure tight, leak free connections.
3. Refer to the tractor operator's manual. Check the tractor's engine oil, hydraulic oil, cooling system, tire pressure, and fuel level. Add fluid or service as required.
4. Inspect the drive belts and mower blades. Belts should be in good condition. Blades should be sharp and securely fastened. Service as required.
5. Test the tractor's operator safety interlock system.

Attaching

1. Drive the tractor slowly forward into the hitch arms of the contour mower. Align the lift arms of the tractor with the mower hitch arms by raising or lowering the front hitch and complete the engagement.
2. Once completely engaged, close the front hitch locking lever.*
3. Engage the parking brake* and shut off the engine.
4. Place the attachment belt onto the PTO drive pulley on the tractor. Ensure the belt is properly seated in each pulley.
5. Engage the PTO spring tension lever*.
6. Wipe hose ends clean, and connect to the tractor's hydraulic quick couplers. If equipped, connect the hoses and quick couplers so the red indicators are paired together and the yellow indicators are paired together.
7. Engage the weight transfer system*.

Detaching

1. Park the tractor on a level surface and set the parking brake.*
2. Disengage the weight transfer system*.
3. Lower the contour mower to the ground and place the primary S.D.L.A. control lever in the

float position.

4. Shut off tractor engine.
5. Move the secondary S.D.L.A. control lever side to side to relieve any pressure in the auxiliary hoses. Disconnect the hydraulic quick couplers from the tractor and place on the contour mower where the couplers will be free of contamination.
6. Release the PTO spring tension lever*.
7. Remove the attachment belt from the PTO drive pulley of the tractor.
8. Open the front hitch locking lever*.
9. Restart the tractor and slowly back away from the contour mower. A side to side movement of the steering wheel may aid disengagement.

Mowing and Operating Procedure

Perform daily inspection and verify that the cutting heights are set properly. Set the tractor's weight transfer system to the desired setting.

With the tractor engine running between 2,000 and 3,000 RPM, engage the PTO switch. Adjust the throttle to the desired engine RPM.

Lower the mower deck to the ground and place the tractor's primary S.D.L.A. control lever in the float position by pushing it to the right until the detent engages. The lever will stay in this position until intentionally removed. Push the secondary S.D.L.A. control lever to the right to fully extend the lift arm control links.

Begin forward motion in the desired path of mowing. Avoid obstacles, removing debris as necessary.

Mowing in a back and forth manner will create a striping pattern in the grass. The full length roller behind each cutting unit rolls the grass in the direction of travel.

Lift the mower decks when the edge of the mowing area is reached. Turn the tractor and mower around and align for the next pass.

Transport of Mower

Before transporting, raise the tractor front hitch and the left and right mower decks. This saves wear and tear on the mower and needless scuffing and rolling over the various surfaces between mowing jobs. Use moderate speed during transport to maintain control of the tractor and to reduce the amount of shock to the tractor and mower deck caused by uneven terrain. Never transport the mower with the PTO engaged. When transporting on slopes, reduce speed and lower the mower close to the ground to improve stability.

* Refer to tractor owner's manual for operation of tractor controls.

GENERAL OPERATION

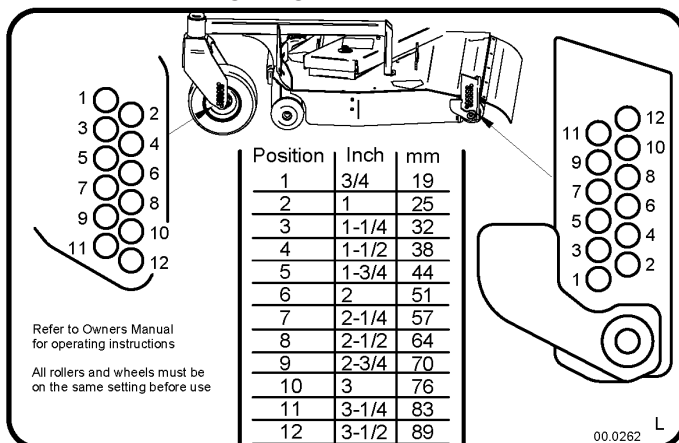
Cutting Height Adjustment

⚠ WARNING

Always set the parking brake, shut off the tractor engine, remove the ignition key, and ensure all moving parts have stopped before checking mower deck or blade condition, or attempting any repair or adjustment.

The cutting height of the mower decks is controlled by the setting of the mower front wheels and the deck rear rollers.

1. Lift the mower decks to the service position. (Refer to the "Deck Flip-up Procedure" in the service section of this manual.)
2. Determine the desired cutting height. Refer to the decals located on the left and right sides of the MJ840 for the settings required to obtain the desired cutting height.



3. Remove the 4 front wheel axle bolts, and reinstall the wheels at the appropriate setting. Torque bolts to 31 ft-lbs (42 Nm).
4. Remove the 2 bolts holding the roller brackets to the decks (1 bolt on both sides of each roller). Reinstall the bolts at the desired cutting height. Torque bolts to 31 ft-lbs (42 Nm).

Mower Front Wheel Path Adjustment

⚠ WARNING

Always set the parking brake, shut off the tractor engine, remove the ignition key, and ensure all moving parts have stopped before checking mower deck or blade condition, or attempting any repair or adjustment.

The front caster wheels on the left and right sides can be repositioned for different applications.

For maximum deck overhang, move the caster wheels to the furthest inboard position.

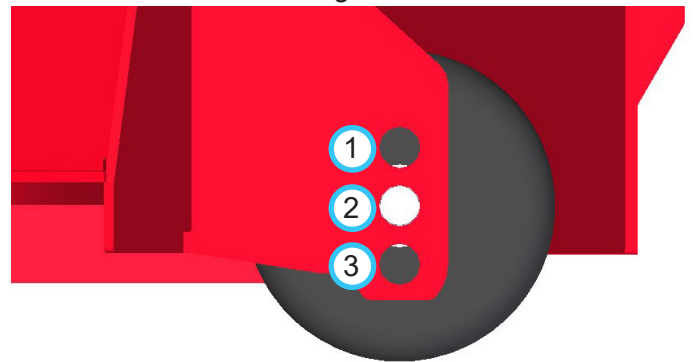
For maximum pass-to-pass consistency, and to achieve the best cut quality, move the caster wheels to the furthest outboard position.

The left and right wheels may be set differently from each other as the application requires.

Upon repositioning the front caster wheels, torque the mounting bolts to 31 ft-lbs (42 Nm).

Anti-Scalp Roller Adjustment

There are three positions for mounting the MJ840 anti-scalp rollers. The five rollers should all be mounted at the same height.



When cutting between 3/4" (19 mm) and 1-1/4" (32 mm), install the anti-scalp rollers in position 1 for best performance.

When cutting between 1-1/2" (38 mm) and 2-1/4" (57 mm), install the anti-scalp rollers in position 2 for best performance.

When cutting between 2-1/2" (64 mm) and 3-1/2" (89 mm), install the anti-scalp rollers in position 3 for best performance.

Upon repositioning the anti-scalp rollers, torque the mounting bolts to 75 ft-lbs (102 Nm).

Mulching Kit (Optional Accessory)

Mulching procedures may vary greatly due to climate, type of grass, and soil conditions. It is generally best to mow frequently and in dry conditions. Leaves are usually mulched and dispersed better when some grass is cut with the leaves.

Mulching often requires more power than normal mowing. When mulching wet and/or thick grass, more frequent cleaning of the underside of the deck is necessary.

Blades must be sharp and in good condition for best results.

SERVICE

⚠ WARNING

Always set the parking brake, shut off power unit engine, remove the ignition key, and ensure all moving parts have come to a complete stop before inspecting components or attempting any repair or adjustment.



Attention

If any component requires replacement, use only original Ventrac replacement parts.

Cleaning and General Maintenance

For best results, and to maintain the finish of the MJ840, clean or wash the mower to remove accumulated clippings, leaves, and dirt when the job is finished. Refer to the "Deck Flip-up procedure" in the service section to access the underside of the deck.

If washing the deck, do not spray directly into bearings or seals. After washing, it is important to run the mower so that water does not reside on seals of bearings for the drive system. When washing is complete, return the deck to the operating position and activate the PTO for 30 seconds to remove any standing water.

Deck Flip-Up Procedure (Service Position)

1. Park tractor on a smooth level surface.
2. Raise tractor front hitch to its highest position.
3. Set parking brake, shut off engine, and remove the key.
4. Move the deck pivot latch toward the front of the deck to disengage and lift the mower deck up to a near vertical position.
5. Release the deck pivot latch to lock the deck in the upright position.
6. To return the deck to the operating position, lift up on the front of the deck, unlock the pivot latch, and lower the deck.
7. Engage the gearbox drive belt tensioning spring.

Mower Blade Inspection/Replacement

⚠ CAUTION

Mower blades may be sharp. Always wear gloves when working with mower blades.

1. Rotate the mower deck up to the service position following the deck flip-up procedure.
2. Inspect the mower blades to ensure cutting edges are sharp. If blades are dull or damaged, they

must be removed and sharpened or replaced.

3. Place a short piece of 2 x 4 wood between the end of the blade and an appropriate structural part of the underside of the deck to prevent the blade from rotating.
4. For the 3) right hand blades, loosen the blade bolt counterclockwise and remove the blade for sharpening or replacement.
5. For the 3) left hand blades, loosen the blade bolt clockwise and remove the blade for sharpening or replacement.
6. When installing a blade, the wood block must be placed on the opposite side to prevent rotation for tightening the blade bolt.
7. Tighten the blade bolt to 75-80 ft-lbs. (102-108 Nm).

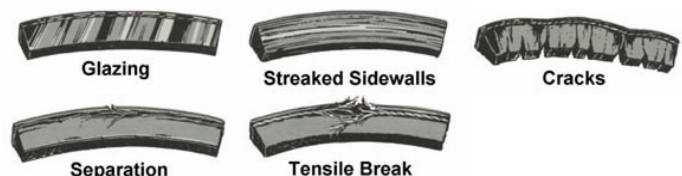
Mower Blade Sharpening

Blades should be sharpened and balanced by a professional. Maintain balance, same bevel, and length of sharpened surface.

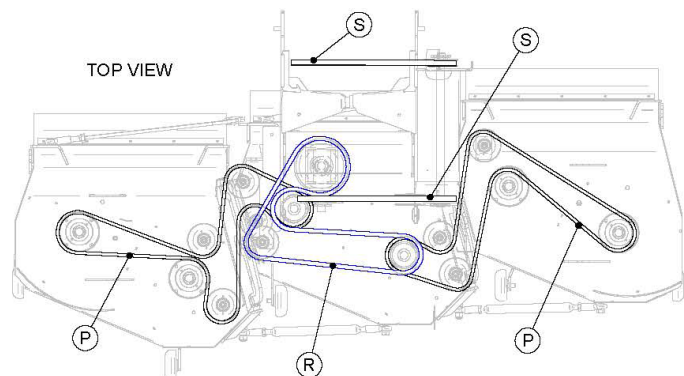
Drive Belt Inspection/Replacement

⚠ WARNING

Always set the parking brake, shut off the tractor engine, remove the ignition key, and ensure all moving parts have stopped before checking mower deck or blade condition, or attempting any repair or adjustment.



Inspecting the drive belts of the mower can prevent sudden belt failure by finding problems before the belts break. Typical wear on a drive belt may result in the conditions shown in the diagram. If any of these conditions occur, the drive belt will require replacement.



SERVICE

Attachment Drive Belt (S)

1. Detach the mower deck from the tractor.
2. Remove the drive pulley shield.
3. Remove the old drive belt.
4. Install the new drive belt over the pulley.
5. Replace the drive pulley shield.

Gearbox Drive Belt (S)

1. Detach the mower deck from the tractor.
2. Raise the carrier frame shield.
3. Release the belt tensioning spring.
4. Remove the old drive belt.
5. Install the new drive belt.
6. Engage the belt tensioning spring.

Center Deck Belt (R)

1. Detach the mower deck from the tractor.
2. Raise the carrier frame shield.
3. Release the center deck belt tensioning spring.
4. Remove the old center deck belt.
5. Install the new center deck belt. Place belt into the pulley system according to the belt diagram located on the underside of the carrier shield.
6. Engage the deck belt tensioning spring.

Left Deck Belt (P)

1. Detach the mower deck from the tractor.
2. Raise the carrier frame shield.
3. Remove the left deck shield and the left deck hinge shield.
4. Release the left deck belt tensioning spring and the center deck belt tensioning spring.
5. Remove the center deck belt from the double spindle pulley that drives the left deck belt.
6. Remove the left deck belt.
7. Install the new left deck belt. Place belt into the pulley system according to the belt diagram located on the underside of the carrier shield.
8. Engage the left deck belt tensioning spring.
9. Place the center deck belt back on the spindle pulley.
10. Engage the center deck belt tensioning spring.
11. Reinstall the left deck shield and the left deck hinge shield.

Right Deck Belt (P)

1. Detach the mower deck from the tractor.
2. Raise the carrier frame shield.
3. Remove the right deck shield and the right deck

hinge shield.

4. Release the right deck belt tensioning spring and the center deck belt tensioning spring.
5. Remove the center deck belt from the double spindle pulley that drives the right deck belt.
6. Remove the right deck belt.
7. Install the new right deck belt. Place belt into the pulley system according to the belt diagram located on the underside of the carrier shield.
8. Engage the right deck belt tensioning spring.
9. Place the center deck belt back on the spindle pulley.
10. Engage the center deck belt tensioning spring.
11. Reinstall the right deck shield and the right deck hinge shield.

Drive Belt Tensioning Adjustments

Each drive belt of the MJ840 mower is spring loaded to maintain proper belt tension. No adjustments are required.

Tire Pressure

The MJ840 is equipped with flat-free, cushioning tires to provide a maintenance free, consistent cutting height. No tire pressure adjustments are required.

Storage

Preparing the Contour Mower for Storage

1. Clean the mower decks and the frame.
2. Inspect for loose or missing hardware, damaged components, or signs of wear.
3. Inspect hydraulic hoses and fittings to ensure tight, leak free connections. Repair or replace any damaged or worn components.
4. Inspect belts, spindles, and blades. Repair or replace any damaged or worn components.
5. Apply grease to all grease points.
6. Depending on the position of the mower during storage, a light coating of oil on the exposed cylinder rod is recommended.
7. Wipe off all excess grease or oil.

Removing the Contour Mower from Storage

1. Clean the mower deck to remove any accumulated dust or debris.
2. Inspect the mower as instructed in the daily inspection section of this manual.
3. Test the mower to ensure all components are working properly.

SERVICE

Lubrication

⚠ WARNING

Always set the parking brake, shut off the tractor engine, remove the ignition key, and ensure all moving parts have stopped before checking mower deck or blade condition, or attempting any repair or adjustment.

Grease after every 50 hours of operation using a lithium complex NLGI #2 grease. In very dirty, sandy, or wet conditions, more frequent greasing may be required.

Grease points, along with the recommended number of pumps of grease, are shown on a decal located on the underside of the deck shield. Refer to Figure 1 at the bottom of the page.

Gearbox

The gearbox uses 75W-140 synthetic gear oil. Gear oil level should be maintained at the level of the check port (A) on the rear or side of the gearbox.

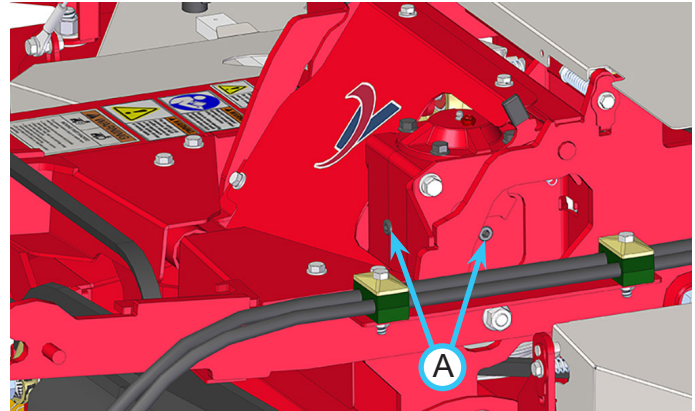
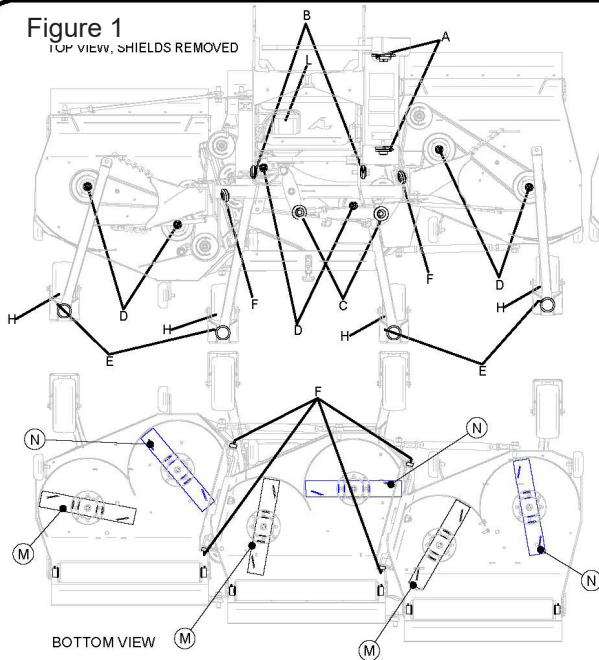
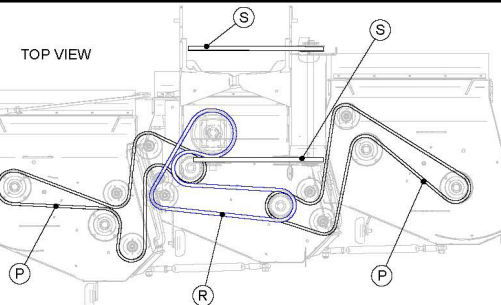


Figure 1
TOP VIEW, SHIELDS REMOVED



TOP VIEW



Service Every 50 Hours

Item	Description	# of Locations	# of Pumps
A	Jackshaft Bearing	2	1
B	Hitch Arm Pivot	2	-
C	Cylinder End	2	-
D	Spindle	6	3
E	Caster Wheel Pivot	4	1
F	Yoke Pivot	6	-
H	Wheel Axle Bearing	4	-
✓ L	Gearbox Oil Level	-	-

*Until fresh grease is visible

Replacement Parts

Item	Description	Part #	Quantity
M	Blade, RH	79.0079	3
N	Blade, LH	79.0080	3
P	Belt	81.AA096	2
R	Belt	81.BB078	1
S	Belt	81.B045	2

Refer to Owners Manual for operating instructions and complete parts list

00.0398

SERVICE

Deck Leveling Procedure

⚠ WARNING

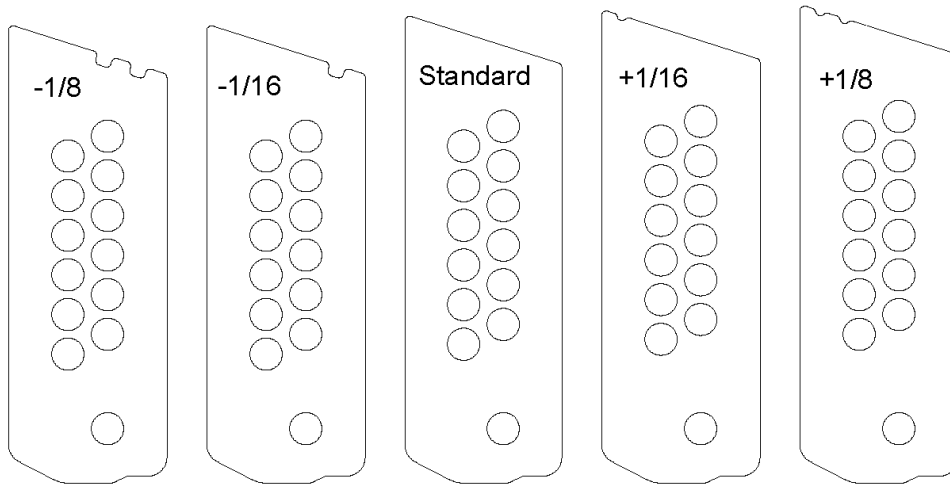
Always set the parking brake, shut off the tractor engine, remove the ignition key, and ensure all moving parts have stopped before checking mower deck or blade condition, or attempting any repair or adjustment.

⚠ CAUTION

Mower blades may be sharp. Always wear gloves when working with mower blades.

Side-to-Side Deck Leveling

For each deck, the side-to-side leveling of the rear of the deck is set by the rear roller bracket. If for any reason, the rear of the deck must be leveled, replacement rear roller brackets are available in 1/16" (1.6 mm) increments and are identified in the diagram below.



Alternate Roller Mounting Brackets

	-1/8* (-3.2 mm)	-1/16* (-1.6 mm)	0*	+1/16* (1.6 mm)	+1/8* (3.2 mm)
Right Roller Mounting Bracket (for Right Deck only)	64.140202	64.140201	64.1402	64.140211	64.140212
Left Roller Mounting Bracket (for Left Deck only)	64.140302	64.140301	64.1403	64.140311	64.140312
Roller Mounting Bracket (for 4 inboard roller mounts)	64.142502	64.142501	64.1425	64.142511	64.142512

*Dimensions are relative to the standard roller mounting bracket. If leveling requires a new bracket, first identify the existing bracket, and determine the amount that the deck must be raised or lowered.

To raise the deck, select the appropriate bracket in the "+" direction.

To lower the deck, select the appropriate bracket in the "-" direction.

If, in the following steps, it is determined that the rear of the deck must be leveled, determine the amount the rear of the deck must be raised or lowered. Identify the rear roller bracket present on the deck, and order a replacement rear roller bracket that will raise or lower the rear of the deck the appropriate amount relative to the existing roller bracket being replaced.

SERVICE

Front to Rear Deck Leveling

1. Place the mower on a hard surface that is clean and level.
2. Set the cutting height to a high setting to allow access to the mower blades. All points must be at the same cutting height.
3. If the deck is equipped with pneumatic tires, ensure that all the tires are inflated to the same pressure.

Center Deck

4. Turn the mower blades so the blade tips are at the rear of the deck and measure the distance between the blade tip and the surface the deck is setting on.
5. Rotate the mower blades so the same tip is at the front of the deck and measure again. The blade tip should be level to 1/8" (3.2 mm) low at the front.
6. If the distance is greater than 1/8" (3.2 mm), the center deck must be leveled. To begin adjustments, loosen the 4) 1/2" bolts that fasten the front of the center deck to the carrier frame.
7. Raise or lower the front of the deck until the front of the deck has been leveled relative to the rear of the deck for both the left and right sides of the deck.
8. Retighten the 4) 1/2" bolts. Torque to 75 ft-lbs (102 Nm).

Left Deck

9. Verify that the rear roller is level with the surface that the deck is setting on. If the roller is not level (if either the right or left end of the roller is raised off the ground), the front and rear connecting links require adjustment.
 - a. If the outboard side of the roller is raised off the measuring surface, the links must be shortened. Loosen the jam nuts, unbolt the rod ends from the center deck, and turn the rod ends in two turns. Reattach rod ends to center deck. Repeat until the rear roller is level with the measuring surface, reattach rod ends to the center deck, and tighten the jam nuts.
 - b. If the inboard side of the roller is raised off the measuring surface, the links must be lengthened. Loosen the jam nuts, unbolt the rod ends from the center deck, and turn the rod ends out two turns. Reattach rod ends to center deck. Repeat until the rear roller is level with the measuring surface, reattach rod ends to the center deck, and tighten the jam nuts.
10. Turn the mower blades so the blade tips are at the rear of the deck and measure the distance

between the blade tip and the surface the deck is setting on.

11. Rotate the mower blades so the same tip is at the front of the deck and measure again. The blade tip should be level to 1/8" (3.2 mm) low at the front.
12. If the distance is greater than 1/8" (3.2 mm), the deck must be leveled. To begin adjustments, loosen the 4) 3/8" bolts that fasten the front yoke anchor plate to the front of the center deck.
13. For the inboard blade, raise or lower the front yoke anchor plate until the inboard blade is level to 1/8" (3.2 mm) low at the front.
14. Retighten the 4) 3/8" bolts. Torque to 31 ft-lbs (42 Nm).
15. For the outboard blade, Loosen the 1/2" bolt that holds the tire swivel frame to the deck.
16. Add 1/2" USS flat washers beneath the caster wheel frame to raise the outboard front of the deck. Remove existing washers to lower the outboard front of the deck.
17. When the deck is level, torque the 1/2" bolt to 75 ft-lbs (102 Nm).

Right Deck

18. Verify that the rear roller is level with the surface that the deck is setting on. If the roller is not level (if either the right or left end of the roller is raised off the ground), the front and rear connecting links require adjustment.
 - a. If the outboard side of the roller is raised off the measuring surface, the links must be lengthened. Loosen the jam nuts, unbolt the rod ends from the center deck, and turn the rod ends out two turns. Reattach rod ends to center deck. Repeat until the rear roller is level with the measuring surface, reattach rod ends to the center deck, and tighten the jam nuts.
 - b. If the inboard side of the roller is raised off the measuring surface, the links must be shortened. Loosen the jam nuts, unbolt the rod ends from the center deck, and turn the rod ends in two turns. Reattach rod ends to center deck. Repeat until the rear roller is level with the measuring surface, reattach rod ends to the center deck, and tighten the jam nuts.
19. Turn the mower blades so the blade tips are at the rear of the deck and measure the distance between the blade tip and the surface the deck is setting on.
20. Rotate the mower blades so the same tip is at the front of the deck and measure again. The blade tip

SERVICE

should be level to 1/8" (3.2 mm) low at the front.

21. If the distance is greater than 1/8" (3.2 mm), the deck must be leveled. To begin adjustments, loosen the 4) 3/8" bolts that fasten the front yoke anchor plate to the front of the right deck.
22. For the inboard blade, raise or lower the front yoke anchor plate until the inboard blade is level to 1/8" (3.2 mm) low at the front.
23. Retighten the 4) 3/8" bolts. Torque to 31 ft-lbs (42 Nm).
24. For the outboard blade, Loosen the 1/2" bolt that holds the tire swivel frame to the deck.
25. Add 1/2" USS flat washers beneath the caster wheel frame to raise the outboard front of the deck. Remove existing washers to lower the outboard front of the deck.
26. When the deck is level, torque the 1/2" bolt to 75 ft-lbs (102 Nm).

Maintenance Schedule

Maintenance Schedule	Item	# of Locations	# of Pumps	AS NEEDED	Daily	At 50 Hours	At 100 Hours	At 150 Hours	At 200 Hours	At 250 Hours	At 300 Hours	At 350 Hours	At 400 Hours	At 450 Hours	At 500 Hours	At 550 Hours	At 600 Hours	At 650 Hours	At 700 Hours	At 750 Hours	At 800 Hours	At 850 Hours	At 900 Hours	At 950 Hours	At 1000 Hours	Yearly	
Grease & Lubrication: See Lubrication Section																											
Jackshaft Bearing	A	2	1		✓	✓	✓	✓	✓	✓	✓	✓	✓	✓	✓	✓	✓	✓	✓	✓	✓	✓	✓	✓	✓	✓	
Hitch Arm Pivot	B	2	^		✓	✓	✓	✓	✓	✓	✓	✓	✓	✓	✓	✓	✓	✓	✓	✓	✓	✓	✓	✓	✓	✓	
Cylinder End	C	2	^		✓	✓	✓	✓	✓	✓	✓	✓	✓	✓	✓	✓	✓	✓	✓	✓	✓	✓	✓	✓	✓	✓	
Spindle	D	6	3		✓	✓	✓	✓	✓	✓	✓	✓	✓	✓	✓	✓	✓	✓	✓	✓	✓	✓	✓	✓	✓	✓	
Caster Wheel Pivot	E	4	1		✓	✓	✓	✓	✓	✓	✓	✓	✓	✓	✓	✓	✓	✓	✓	✓	✓	✓	✓	✓	✓	✓	
Yoke Pivot	F	6	^		✓	✓	✓	✓	✓	✓	✓	✓	✓	✓	✓	✓	✓	✓	✓	✓	✓	✓	✓	✓	✓	✓	
Rear Roller Bearing ** (Serial # 1001-1875)	G	6	1	**	✓	✓	✓	✓	✓	✓	✓	✓	✓	✓	✓	✓	✓	✓	✓	✓	✓	✓	✓	✓	✓	✓	
Wheel Axle Bearing **	H	4	^	**	✓	✓	✓	✓	✓	✓	✓	✓	✓	✓	✓	✓	✓	✓	✓	✓	✓	✓	✓	✓	✓	✓	
Gearbox, Top Bearing	L	1	1			✓		✓		✓		✓		✓		✓		✓		✓		✓		✓		✓	
Check Gearbox Oil Level						✓		✓		✓		✓		✓		✓		✓		✓		✓		✓		✓	
Change Gearbox Oil. Replace w/ 75-140 Synthetic gear oil																										✓	
Inspection																											
Inspect for Loose, Missing, or Worn Components.					✓																						
Inspect Belts, Pulleys, Blades, and Blade Retaining Bolts.					✓																						
Inspect Hitch Pivot Bolts. Torque to 170 ft lbs (230 Nm).							✓		✓		✓		✓		✓		✓		✓		✓		✓		✓		✓
Inspect Anti-scalp Roller Axle Bolts. Torque to 75 ft lbs (102 Nm).							✓		✓		✓		✓		✓		✓		✓		✓		✓		✓		✓
Inspect Rear Roller Axle Bolts. Torque to 35 ft lbs (47 Nm).							✓		✓		✓		✓		✓		✓		✓		✓		✓		✓		✓
Inspect Caster Wheel Axle Bolts and Rear Roller Bracket Bolts. Torque to 31 ft lbs (42 Nm).							✓		✓		✓		✓		✓		✓		✓		✓		✓		✓		✓
Inspect Safety Decals.					✓																						
** Operation in severe conditions may require more frequent service intervals.																											
^ Grease Until Fresh Grease is visible																											

SERVICE

Maintenance Checklist

Maintenance Checklist	Item	# of Locations	# of Pumps	AS NEEDED	Daily	At 50 Hours	At 100 Hours	At 150 Hours	At 200 Hours	At 250 Hours	At 300 Hours	At 350 Hours	At 400 Hours	At 450 Hours	At 500 Hours	At 550 Hours	At 600 Hours	At 650 Hours	At 700 Hours	At 750 Hours	At 800 Hours	At 850 Hours	At 900 Hours	At 950 Hours	At 1000 Hours	Yearly
Grease & Lubrication: See Lubrication Section																										
Jackshaft Bearing	A	2	1																							
Hitch Arm Pivot	B	2	^																							
Cylinder End	C	2	^																							
Spindle	D	6	3																							
Caster Wheel Pivot	E	4	1																							
Yoke Pivot	F	6	^																							
Rear Roller Bearing ** (Serial # 1001-1875)	G	6	1	**																						
Wheel Axle Bearing **	H	4	^	**																						
Gearbox, Top Bearing	L	1	1																							
Check Gearbox Oil Level																										
Change Gearbox Oil. Replace w/ 75w-140 Synthetic gear oil																										
Inspection																										
Inspect for Loose, Missing, or Worn Components.																										
Inspect Belts, Pulleys, Blades, and Blade Retaining Bolts.																										
Inspect Hitch Pivot Bolts. Torque to 170 ft lbs (230 Nm).																										
Inspect Anti-scalp Roller Axle Bolts. Torque to 75 ft lbs (102 Nm).																										
Inspect Rear Roller Axle Bolts. Torque to 35 ft lbs (47 Nm).																										
Inspect Caster Wheel Axle Bolts and Rear Roller Bracket Bolts. Torque to 31 ft lbs (42 Nm).																										
Inspect Safety Decals																										
** Operation in severe conditions may require more frequent service intervals.																										
^ Grease Until Fresh Grease is visible																										

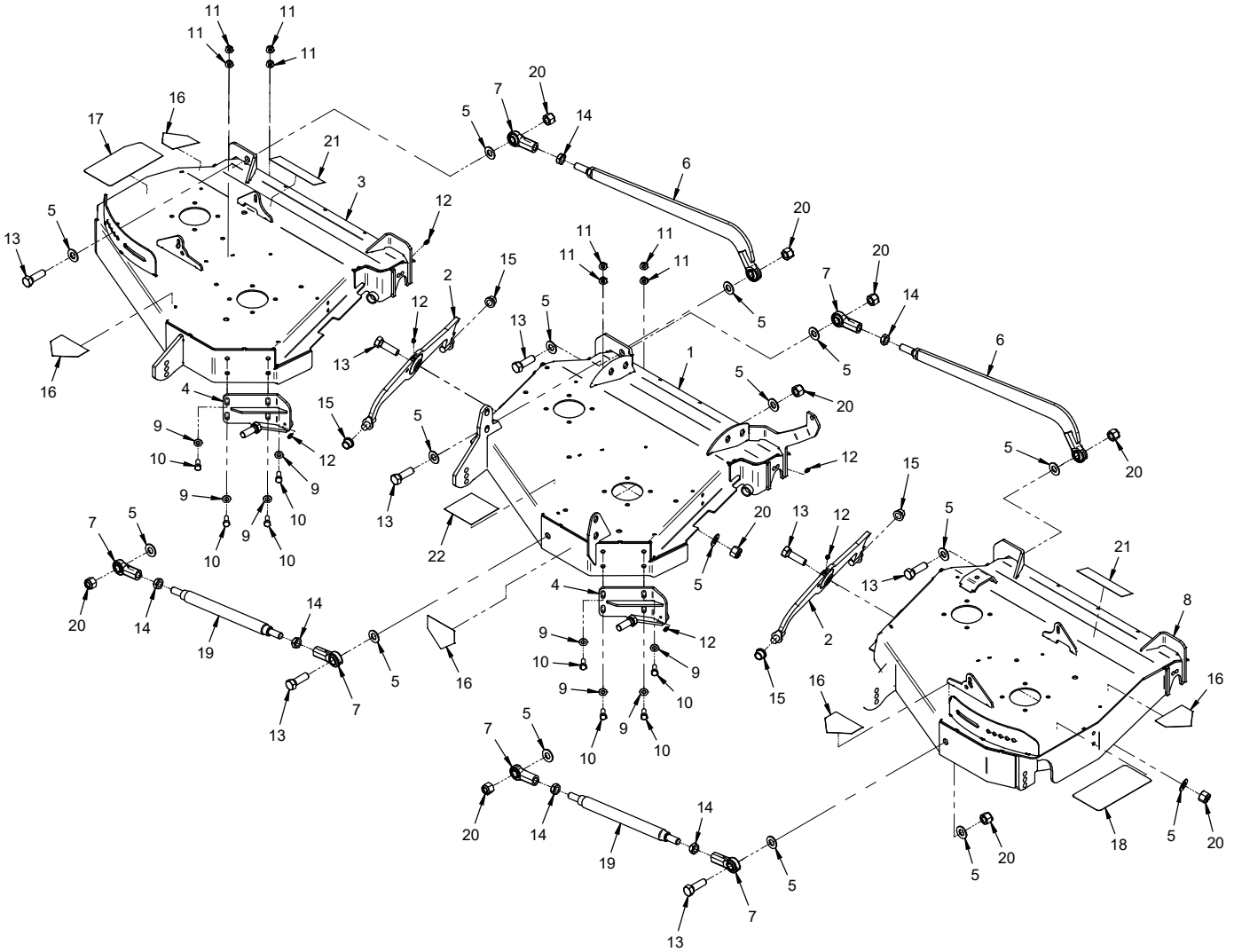
SPECIFICATIONS

Dimensions

Overall Height	22 inches (56 cm)
Overall Length	52 inches (132 cm)
. With 4000 series tractor, standard hitch -	121 inches (307 cm)
. With 4000 series tractor, 3 point hitch -	130 inches (330 cm)
Overall Width	84 inches (213 cm)
Transport Width	82 inches (208 cm)
Ground Clearance, Transport Mode (ground to center rear roller)	5 inches (13 cm)
Cutting Width	83 inches (211 cm)
Cutting Width, Individual Mowing deck	29 inches (74 cm)
Terrain Contour Angle, Left and Right decks	+/- 20 degrees
Weight	575 pounds (261 kg)
Blade Length	15" (38 cm)
Blades Per Deck	2 (1 LH, 1 RH)
Cutting Height Range	3/4 (19 mm) to 3-1/2 inches (89 mm)
Front Gauge Wheels	Adjustable, Flat Free
Rear Rollers	Full Width, Smooth
Anti-scalp Wheels	Adjustable, 3 position

PARTS

ILLUSTRATED DRAWING Decks & Connector Links



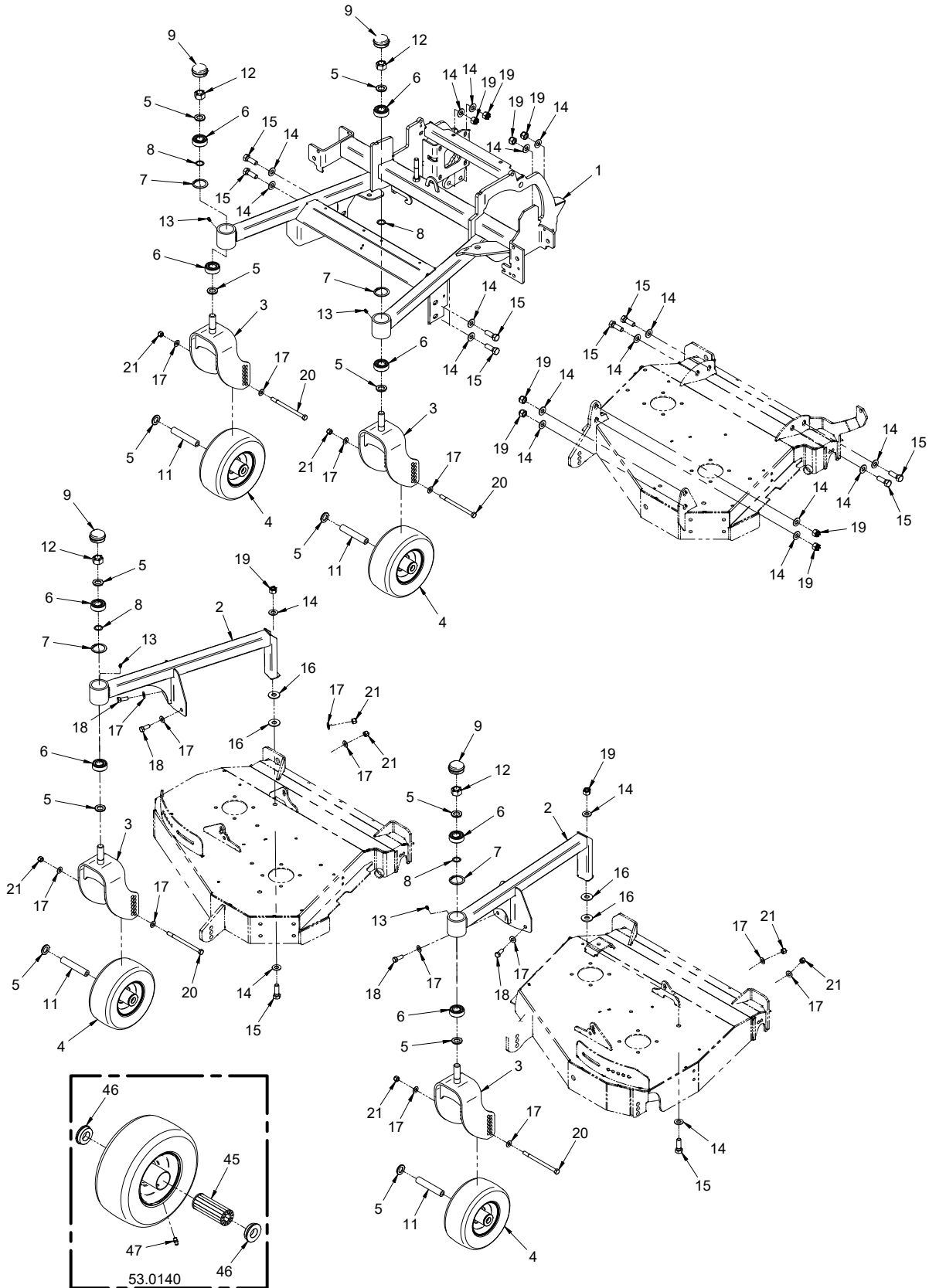
PARTS

Decks & Connector Links

REF.	PART NO.	DESCRIPTION	QTY.
1	62.1293	.DECK, MOWER WELDMENT CENTER MJ (Serial # 1001-2339)	1
1	62.1492	.DECK, MOWER WELDMENT CENTER MJ (Serial # 2340-)	1
2	62.1302	.FRAME, PIVOT YOKE - MJ840 (Serial # 1001-2339)	2
2	62.1489	.FRAME, PIVOT YOKE - MJ840 (Serial # 2340-)	2
3	62.1295	.DECK, MOWER WELDMENT RIGHT (Serial # 1001-2339)	1
3	62.1494	.DECK, MOWER WELDMENT RIGHT (Serial # 2340-)	1
4	64.1401	.PLATE, FRONT YOKE ANCHOR	2
5	95.10	.WASHER, FLAT 5/8 SAE	14
6	42.0535	.LINK, DECK CONNECT REAR	2
7	43.010	.ROD END, 5/8 SPHERICAL	6
8	62.1294	.DECK, MOWER WELDMENT LEFT (Serial # 1001-2339)	1
8	62.1493	.DECK, MOWER WELDMENT LEFT (Serial # 2340-)	1
9	95.06	.WASHER, FLAT 3/8 SAE	8
10	90.0608	.BOLT, 3/8-16 USS X 1	8
11	99.SF06	.NUT, SRF 3/8-16 USS	8
12	29.GF0001	.GREASE FTG, 1/4 SAE ST	6
13	91.1016	.BOLT, 5/8-18 SAE X 2	8
14	99.E0011	.NUT, JAM 5/8-18 SAE	6
15	85.B0065	.BUSHING, 5/8 IDX13/16 ODX5/8LG	4
16	00.0123	.DECAL, KEEP HANDS AND FEET AWAY	5
17	00.0260	.DECAL, HT ADJUST, RIGHT	1
18	00.0262	.DECAL, HT ADJUST, LEFT	1
19	42.0534	.LINK, DECK CONNECT FRONT	2
20	99.A10NFN	.LOCKNUT, NYLON 5/8-18 SAE ZP	10
21	00.0265	.DECAL, THROWN OBJECT HAZARD	2
22	00.0062	.DECAL, DANGER SHIELD MISSING	1

PARTS

ILLUSTRATED DRAWING Carrier Frame



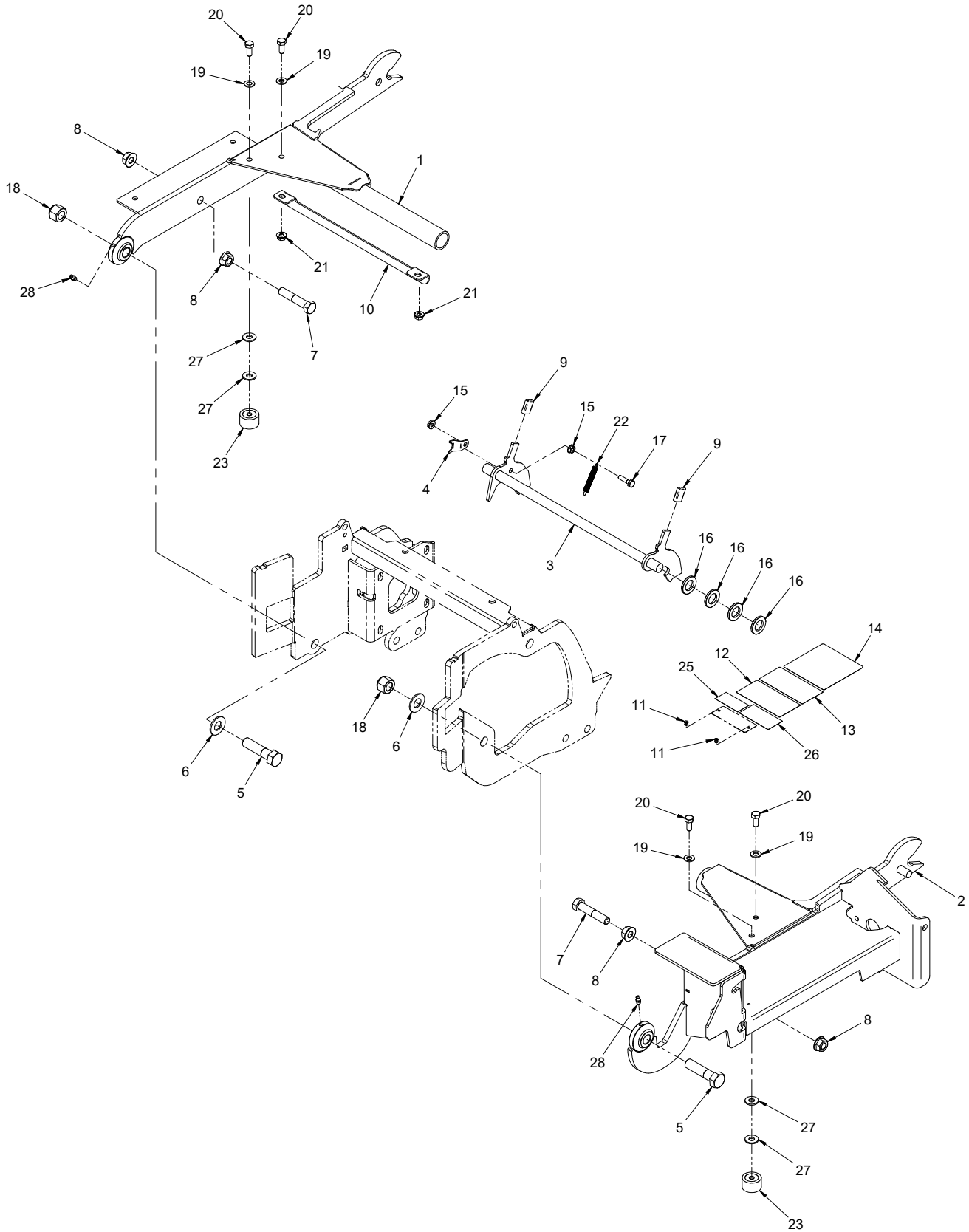
PARTS

Carrier Frame

REF.	PART NO.	DESCRIPTION	QTY.
1	62.1298	.FRAME, CARRIER MAIN - MJ840 (Serial # 1001-1803).	1
1	62.1424	.FRAME, CARRIER MAIN - MJ840 (Serial # 1804-).	1
2	62.1299	.FRAME, TIRE SWIVEL MJ	2
3	50.0187	.SPINDLE, TIRE SWIVEL MJ	4
4	53.0140	.WHEEL, ASM 9 X 3.5 X 4 FLATFREE	4
5	99.B0057-2	.WASHER, MACH 3/4 X 1-1/4 10 GA ZP	12
6	55.0023	.BEARING, BALL .75 ID X 1.78 OD	8
7	04.0013	.SNAP RING, INT .068 X 1.75	4
8	99.B0052	.SHIM, STEEL 3/4 X 1 X .062	4
9	53.0080	.DUST CAP, BEARING MOWER CASTER	4
11	50.0055	.TUBE, AXLE-WHEEL LM	4
12	99.A12NF	.LOCKNUT, STOVER 3/4-16 SAE	4
13	29.GF0001	.GREASE FTG, 1/4 SAE ST	4
14	95.08	.WASHER, FLAT 1/2 SAE	20
15	90.0812	.BOLT, 1/2-13 USS X 1 1/2	10
16	94.08	.WASHER, FLAT 1/2 USS	4
17	95.06	.WASHER, FLAT 3/8 SAE	16
18	90.0608	.BOLT, 3/8-16 USS X 1	4
19	99.A08N	.LOCKNUT, NYLON 1/2-13 USS	10
20	90.0644	.BOLT, 3/8-16 USS X 5 1/2	4
21	99.A06N	.LOCKNUT, NYLON 3/8-16 USS	8
45	55.0071	.BEARING, 3/4 ROLLER 3.25" LONG	1
46	55.0072	.BEARING, RETAINER 3/4"	2
47	29.GF0001	.GREASE FTG, 1/4 SAE ST	1

PARTS

ILLUSTRATED DRAWING Hitch Arms



PARTS

Hitch Arms

REF.	PART NO.	DESCRIPTION	QTY.
1	62.1296	.HITCH, ARM RIGHT - MJ840	1
2	62.1297	.HITCH, ARM LEFT - MJ840	1
3	42.0533	.LATCH, DECK PIVOT MJ	1
4	64.1411	.BRACKET, DECK PIVOT LATCH MJ	1
5	91.1020	.BOLT, 5/8-18 SAE X 2 1/2	2
6	95.10	.WASHER, FLAT 5/8 SAE	2
7	90.0820	.BOLT, 1/2-13 USS X 2 1/2	2
8	99.SF08	.NUT, SRF 1/2-13 USS	4
9	06.0044	.CAP, PLASTIC 1/8 X 1/2 X 7/8	2
10	42.0450	.LINK, SPACING - LIFT ARMS	1
11	04.0007	.RIVET, POP DOME 1/8 X 1/8 S.S.	2
12	00.0217	.DECAL, WARNING READ OWNERS MANUAL	1
13	00.0220	.DECAL, GENERAL SAFETY	1
14	00.0101	.DECAL, HAZARD-MOVING PART	1
15	99.SF04	.NUT, SRF 1/4-20 USS	2
16	99.B0057-2	.WASHER, MACH 3/4 X 1-1/4 10 GA ZP	4
17	90.0408	.BOLT, 1/4-20 USS X 1	1
18	99.A10NFN	.LOCKNUT, NYLON 5/8-18 SAE ZP	2
19	95.05	.WASHER, FLAT 5/16 SAE	4
20	90.0506	.BOLT, 5/16-18 USS X 3/4	4
21	99.SF05	.NUT, SRF 5/16-18 USS	2
22	41.0096	.SPRING, EXT 5/16 OD X 2-1/4	1
23	05.0118	.BUMPER, RUBBER CYLINDRICAL	2
25	00.0100	.DECAL, MADE IN USA	1
26	00.0219	.DECAL, WARNING DO NOT REACH	1
27	94.05	.WASHER, FLAT 5/16 USS	4
28	29.GF0001	.GREASE FTG, 1/4 SAE ST	2

PARTS

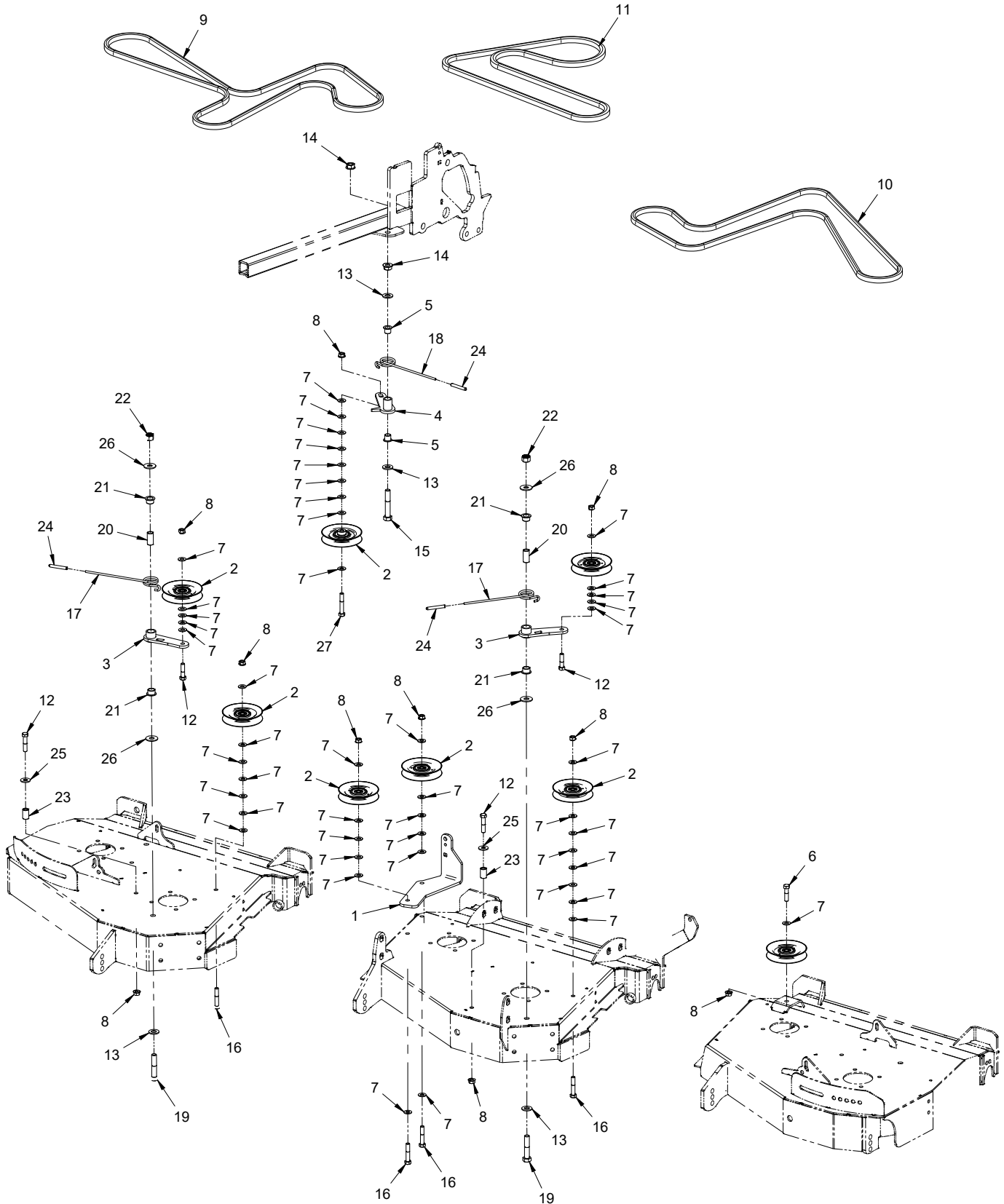
Drive Shaft & Gearbox

REF.	PART NO.	DESCRIPTION	QTY.
1	87.0221	.GEARBOX	1
2	40.0354	.IDLER ARM, GEAR BOX MJ	1
3	83.0013	.PULLEY, IDLER FLAT 3/8 X 3 1/2	1
4	42.0536	.SHAFT, DRIVE HITCH ARM MJ	1
5	83.BK55H	.PULLEY, 5.5" H-BUSHING	1
6	83.BK45H	.PULLEY, 4.5" H-BUSHING	1
7	83.H16S	.BUSHING, 1" SPLIT 1/4" KEY	4
8	85.K0410	.KEY, 1/4 X 1-1/4	4
9	95.06	.WASHER, FLAT 3/8 SAE (Serial # 1001-1447)	5
9	95.06	.WASHER, FLAT 3/8 SAE (Serial # 1448-)	4
10	90.0614	.BOLT, 3/8-16 USS X 1 3/4	1
11	99.SF06	.NUT, SRF 3/8-16 USS	1
12	85.B0027	.BUSHING, 1/2 ID X 5/8 OD X 5/8	2
13	99.SF08	.NUT, SRF 1/2-13 USS	2
14	90.0824	.BOLT, 1/2-13 USS X 3	1
15	83.BK60H	.PULLEY, 6" H-BUSHING	1
16	90.0406	.BOLT, 1/4-20 USS X 3/4	9
17	83.BK72H	.PULLEY, 7.2" H-BUSH	1
18	55.FB16016-1	.BEARING, FLANGE BLOCK 1"	2
19	29.GF0001	.GREASE FTG, 1/4 SAE ST	2
20	99.SF05	.NUT, SRF 5/16-18 USS	4
21	99.E0046	.NUT, "U" 1/4-20 EXTRUDED	1
22	60.1034	.SHIELD, DRIVE PULLEY - MJ	1
23	81.B045	.BELT, B45	1
24	41.0084	.SPRING, TORSION LH 1-3/16 IDX7	1
25	81.B045	.BELT, B45	1
26	95.08	.WASHER, FLAT 1/2 SAE	1
27	96.06	.WASHER, LOCK 3/8	4
28	90.0608	.BOLT, 3/8-16 USS X 1	4
30	99.SF0508	.BOLT, SRF 5/16-18 USS X 1	4
31	06.0060	.CAP, VINYL 3/16 ID X 2 LONG	1
32	96.04	.WASHER, LOCK 1/4	1
33	95.04	.WASHER, FLAT 1/4 SAE	1
34	99.G0014	.WASHER, 3/8 USS FW .165 THK (Serial # 1448-2355)	1
35	60.1056	.COVER, PULLEY (Serial # 1448-)	1
50	23.0163	.VALVE, RELIEF	1
51	89.0094	.SEAL, SHAFT	2
52	55.0089	.BEARING, CUP SMALL	1
53	55.0090	.BEARING, CONE SMALL	1
54	55.0091	.BEARING, CUP LARGE	3
55	55.0092	.BEARING, CONE LARGE	3
56	89.0096	.GASKET, .005, FOR 87.0221	A/R^
56	89.0097	.GASKET, .015, FOR 87.0221	A/R^
56	89.0098	.GASKET, .003, FOR 87.0221	A/R^
57	89.0099	.KIT, SEAL & GASKET FOR 87.0221	1

^ When replacing gaskets, measure the thickness of the gasket stack that was removed from the gearbox and replace with a stack of equal thickness.

PARTS

ILLUSTRATED DRAWING Deck Belts (Serial # 1001-1447)



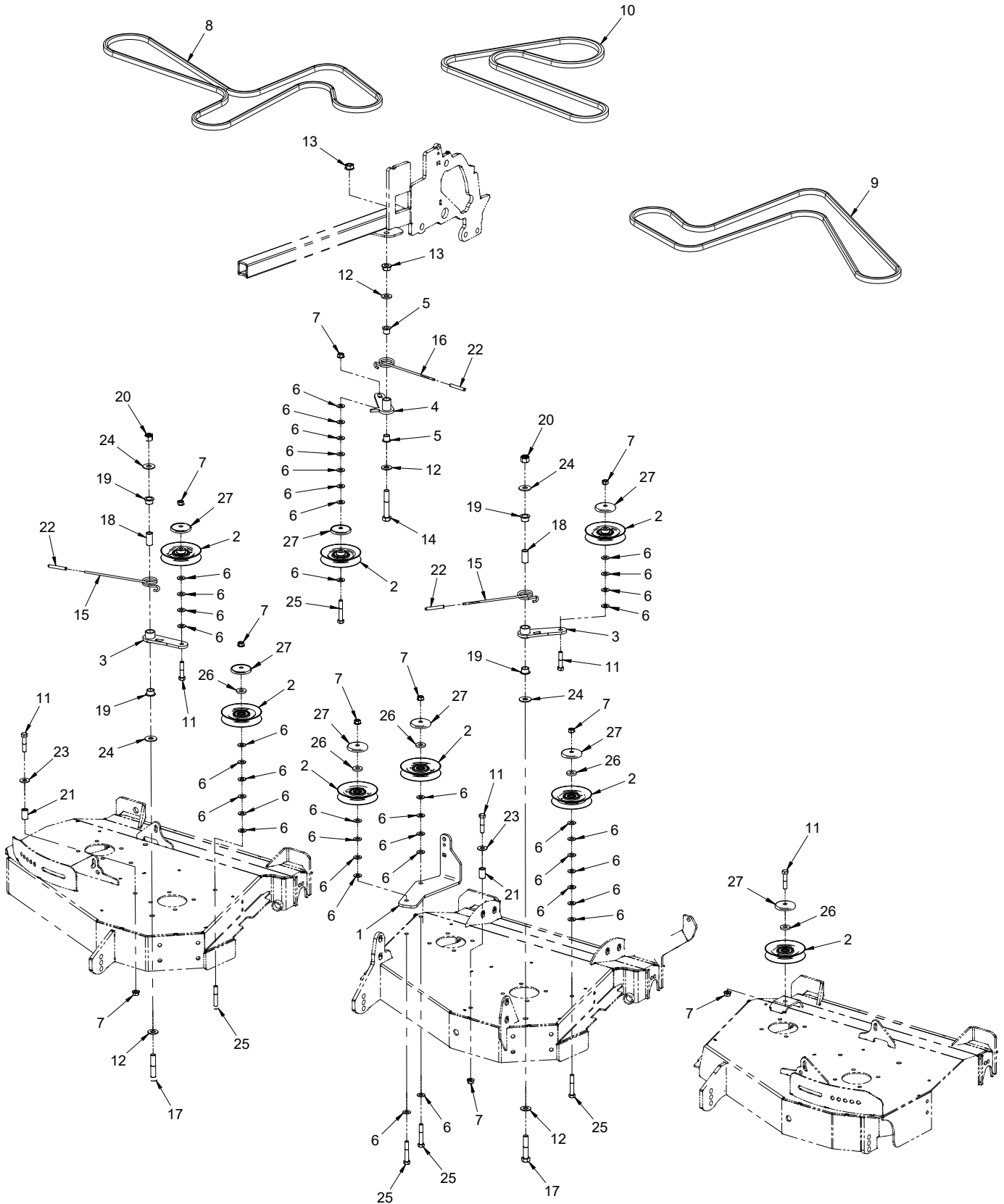
PARTS

Deck Belts (Serial # 1001-1447)

REF.	PART NO.	DESCRIPTION	QTY.
1	64.1412	.BRACKET, IDLER MOUNT	1
2	83.0038	.PULLEY, V-IDLER 4-1/4 X 3/8 ID	8
3	40.0355	.IDLER ARM, OUTER DECK MJ	2
4	40.0353	.IDLER ARM, CENTER DECK MJ	1
5	85.B0027	.BUSHING, 1/2 ID X 5/8 OD X 5/8	2
6	90.0612	.BOLT, 3/8-16 USS X 1 1/2	1
7	95.06	.WASHER, FLAT 3/8 SAE	48
8	99.SF06	.NUT, SRF 3/8-16 USS	10
9	81.AA096	.BELT, AA96	1
10	81.AA096	.BELT, AA96	1
11	81.BB078	.BELT, BB78	1
12	90.0614	.BOLT, 3/8-16 USS X 1 3/4	4
13	95.08	.WASHER, FLAT 1/2 SAE	4
14	99.SF08	.NUT, SRF 1/2-13 USS	2
15	90.0824	.BOLT, 1/2-13 USS X 3	1
16	90.0616	.BOLT, 3/8-16 USS X 2	4
17	41.0084	.SPRING, TORSION LH 1-3/16 IDX7	2
18	41.0083	.SPRING, TORSION RH 1-3/16 IDX7	1
19	90.0820	.BOLT, 1/2-13 USS X 2 1/2	2
20	64.1415	.BUSHING, ANTI-SCALP/IDLER SS	2
21	85.B0088	.BUSHING, 5/8 ID X 3/4 OD X 1/2	4
22	99.A08N	.LOCKNUT, NYLON 1/2-13 USS	2
23	64.1453	.BUSHING, BELT TENSIONER	2
24	06.0060	.CAP, VINYL 3/16 ID X 2 LONG	3
25	94.06	.WASHER, FLAT 3/8 USS	2
26	94.07	.WASHER, FLAT 7/16 USS	4
27	90.0618	.BOLT, 3/8-16 USS X 2 1/4	1

PARTS

ILLUSTRATED DRAWING Deck Belts (Serial # 1448-)



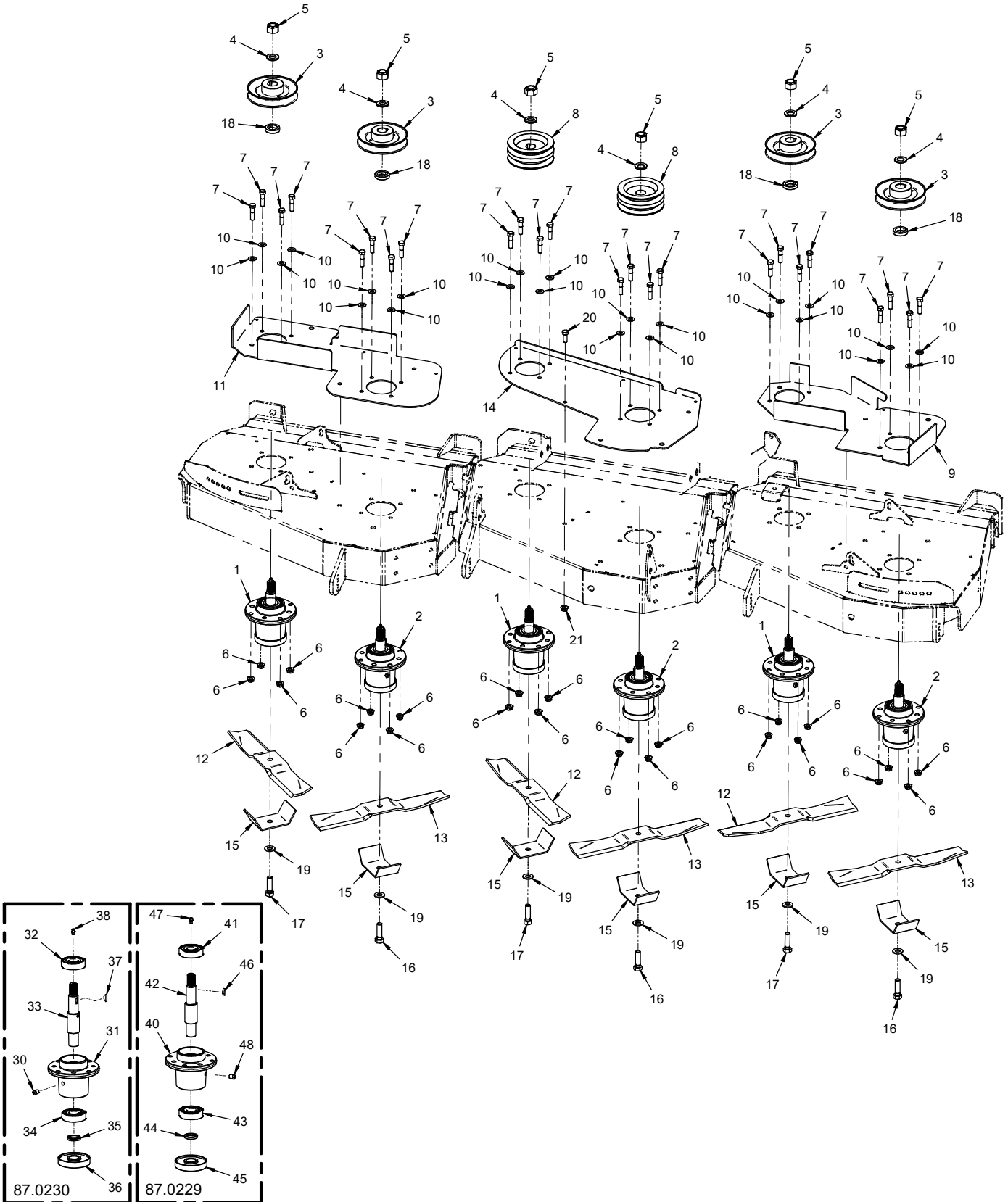
PARTS

Deck Belts (Serial # 1448-)

REF.	PART NO.	DESCRIPTION	QTY.
1	64.1412	.BRACKET, IDLER MOUNT	1
2	83.0038	.PULLEY, V-IDLER 4-1/4 X 3/8 ID	8
3	40.0355	.IDLER ARM, OUTER DECK MJ	2
4	40.0353	.IDLER ARM, CENTER DECK MJ	1
5	85.B0027	.BUSHING, 1/2 ID X 5/8 OD X 5/8	2
6	95.06	.WASHER, FLAT 3/8 SAE	39
7	99.SF06	.NUT, SRF 3/8-16 USS	10
8	81.AA096	.BELT, AA96	1
9	81.AA096	.BELT, AA96	1
10	81.BB078	.BELT, BB78	1
11	90.0614	.BOLT, 3/8-16 USS X 1 3/4	5
12	95.08	.WASHER, FLAT 1/2 SAE	4
13	99.SF08	.NUT, SRF 1/2-13 USS	2
14	90.0824	.BOLT, 1/2-13 USS X 3	1
15	41.0084	.SPRING, TORSION LH 1-3/16 IDX7	2
16	41.0083	.SPRING, TORSION RH 1-3/16 IDX7	1
17	90.0820	.BOLT, 1/2-13 USS X 2 1/2	2
18	64.1415	.BUSHING, ANTI-SCALP/IDLER SS	2
19	85.B0088	.BUSHING, 5/8 ID X 3/4 OD X 1/2	4
20	99.A08N	.LOCKNUT, NYLON 1/2-13 USS	2
21	64.1453	.BUSHING, BELT TENSIONER	2
22	06.0060	.CAP, VINYL 3/16 ID X 2 LONG	3
23	94.06	.WASHER, FLAT 3/8 USS	2
24	94.07	.WASHER, FLAT 7/16 USS	4
25	90.0618	.BOLT, 3/8-16 USS X 2 1/4	5
26	99.G0014	.WASHER, 3/8 USS FW .165 THK (Serial # 1448-2339)	5
27	60.1056	.COVER, PULLEY	8

PARTS

ILLUSTRATED DRAWING Spindles



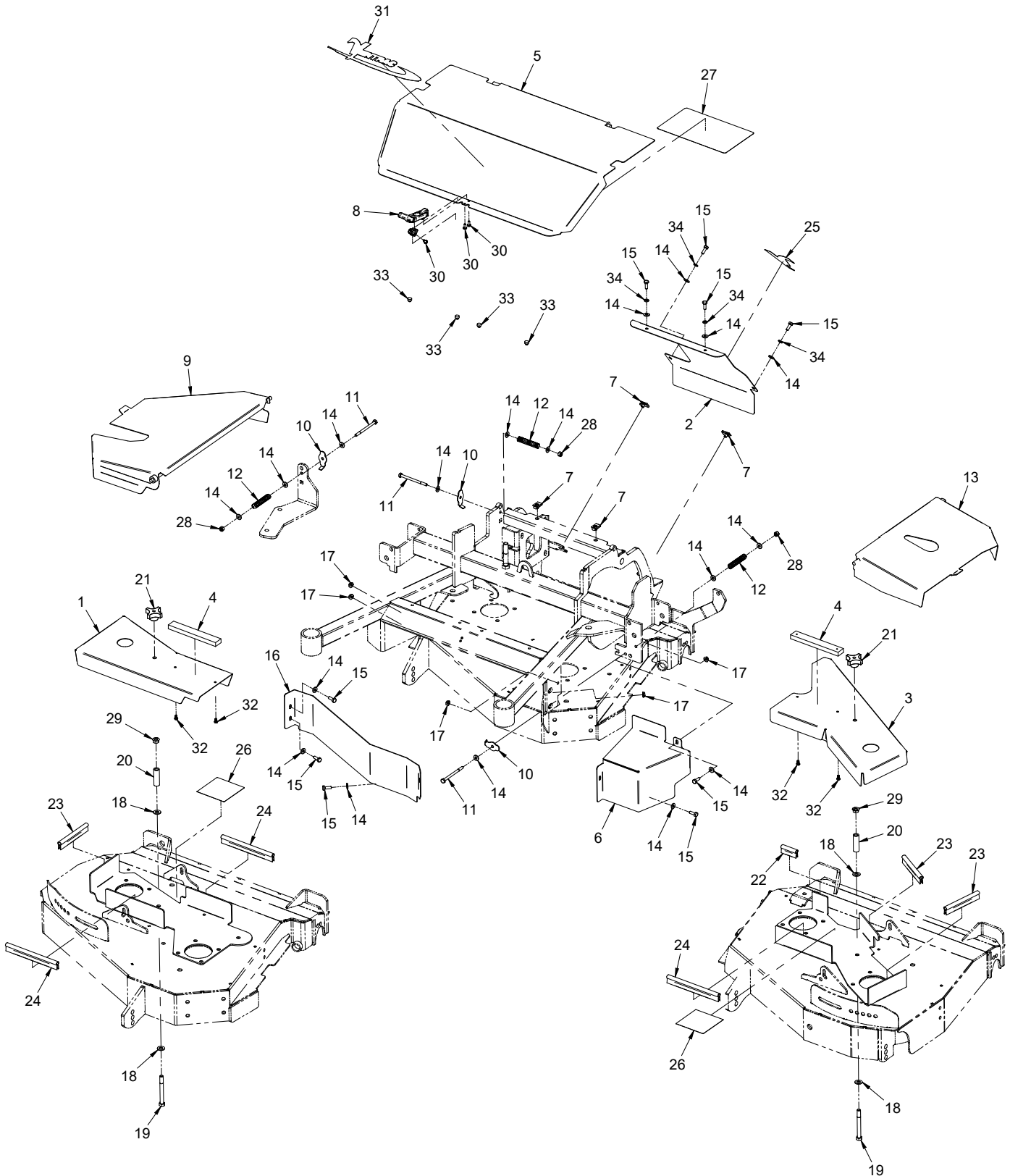
PARTS

Spindles

REF.	PART NO.	DESCRIPTION	QTY.
1	87.0229	.SPINDLE, ASM RH 25MM AL	3
2	87.0230	.SPINDLE, ASM LH 25MM AL	3
3	83.0050	.PULLEY, 5-1/8, 25MM STR. BORE	4
4	99.B0057-2	.WASHER, MACH 3/4 X 1-1/4 10 GA ZP	6
5	99.A12NF	.LOCKNUT, STOVER 3/4-16 SAE	6
6	99.E0082	.NUT, LOCKING FLANGE 3/8 - 16	24
7	90.0612	.BOLT, 3/8-16 USS X 1 1/2	24
8	83.0055	.PULLEY, 2BK50 25MM BORE	2
9	64.1408	.BRACKET, SPINDLE MOUNT LEFT (Serial # 1001-2339)	1
9	64.1985	.BRACKET, SPINDLE MOUNT LEFT (Serial # 2340-)	1
10	95.06	.WASHER, FLAT 3/8 SAE	24
11	64.1407	.BRACKET, SPINDLE MOUNT RIGHT (Serial # 1001-2339)	1
11	64.1984	.BRACKET, SPINDLE MOUNT RIGHT (Serial # 2340-)	1
12	79.0079	.BLADE, 15.00X1/2 RH F LOWLIFT	3
13	79.0080	.BLADE, 15.00X1/2 LH F LOWLIFT	3
14	64.1409	.BRACKET, SPINDLE MOUNT CENTER (Serial # 1001-2059)	1
14	64.1902	.BRACKET, SPINDLE MOUNT CENTER (Serial # 2060-)	1
15	64.2002	.GUARD, SPINDLE/ANTI-STRING	6
16	91.0814-8L	.BOLT, 1/2-20 X 1 3/4 LH GR8	3
17	91.0814-8	.BOLT, 1/2-20 X 1 3/4 GR8	3
18	85.B0080	.BUSHING, 1-1/2 OD, 1 ID	4
19	95.08	.WASHER, FLAT 1/2 SAE	6
20	90.0608	.BOLT, 3/8-16 USS X 1 (Serial # 2060-)	1
21	99.SF06	.NUT, SRF 3/8-16 USS (Serial # 2060-)	1
30	29.GF0017	.FITTING, RELIEF	1
31	87.0209-1	.HOUSING, SPINDLE AL	1
32	55.0057	.BEARING, BALL 25 MM X 62 MM	1
33	87.0208-2	.SHAFT, SPINDLE LH	1
34	55.0057	.BEARING, BALL 25 MM X 62 MM	1
35	85.B0082	.BUSHING, SPINDLE SHAFT SPACER	1
36	87.0210	.SPINDLE, FLANGE SHIELD	1
37	85.W0406	.KEY, WOODRUFF 1/4 X 3/4	1
38	29.GF0001	.GREASE FTG, 1/4 SAE ST	1
40	87.0209-1	.HOUSING, SPINDLE AL	1
41	55.0057	.BEARING, BALL 25 MM X 62 MM	1
42	87.0209-2	.SHAFT, SPINDLE RH	1
43	55.0057	.BEARING, BALL 25 MM X 62 MM	1
44	85.B0082	.BUSHING, SPINDLE SHAFT SPACER	1
45	87.0210	.SPINDLE, FLANGE SHIELD	1
46	85.W0406	.KEY, WOODRUFF 1/4 X 3/4	1
47	29.GF0001	.GREASE FTG, 1/4 SAE ST	1
48	29.GF0017	.FITTING, RELIEF	1

PARTS

ILLUSTRATED DRAWING Shields



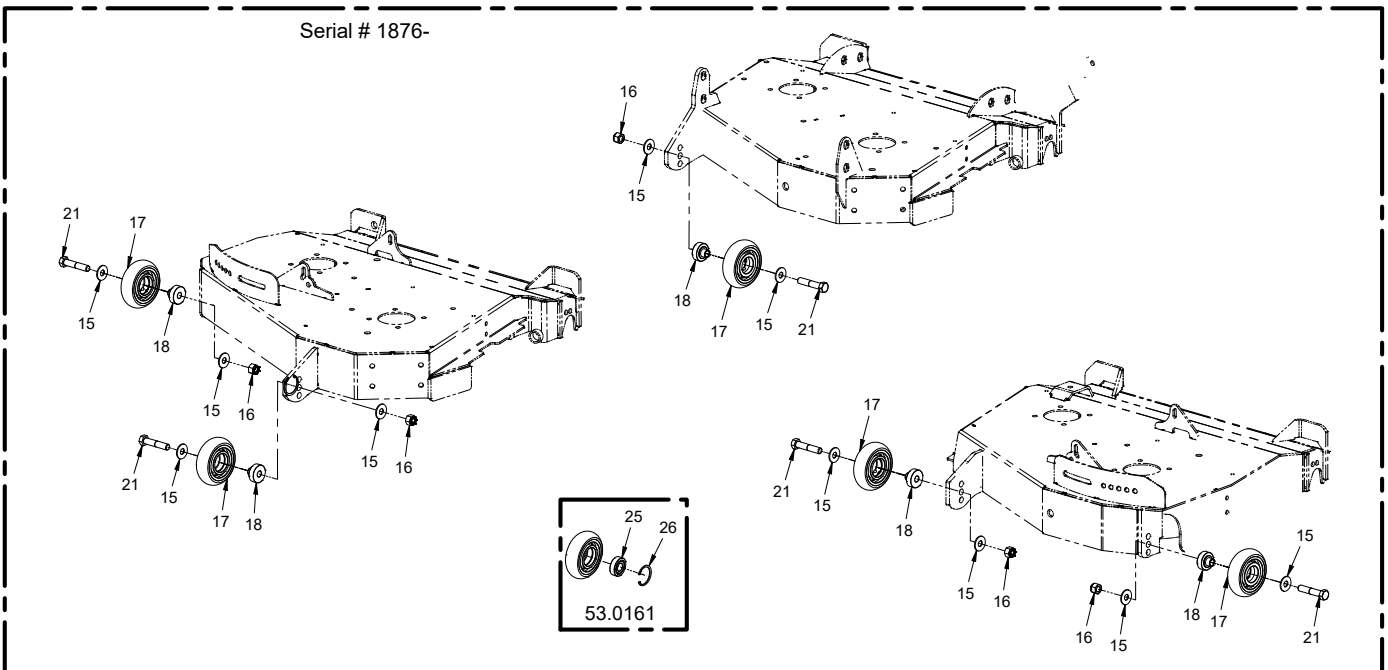
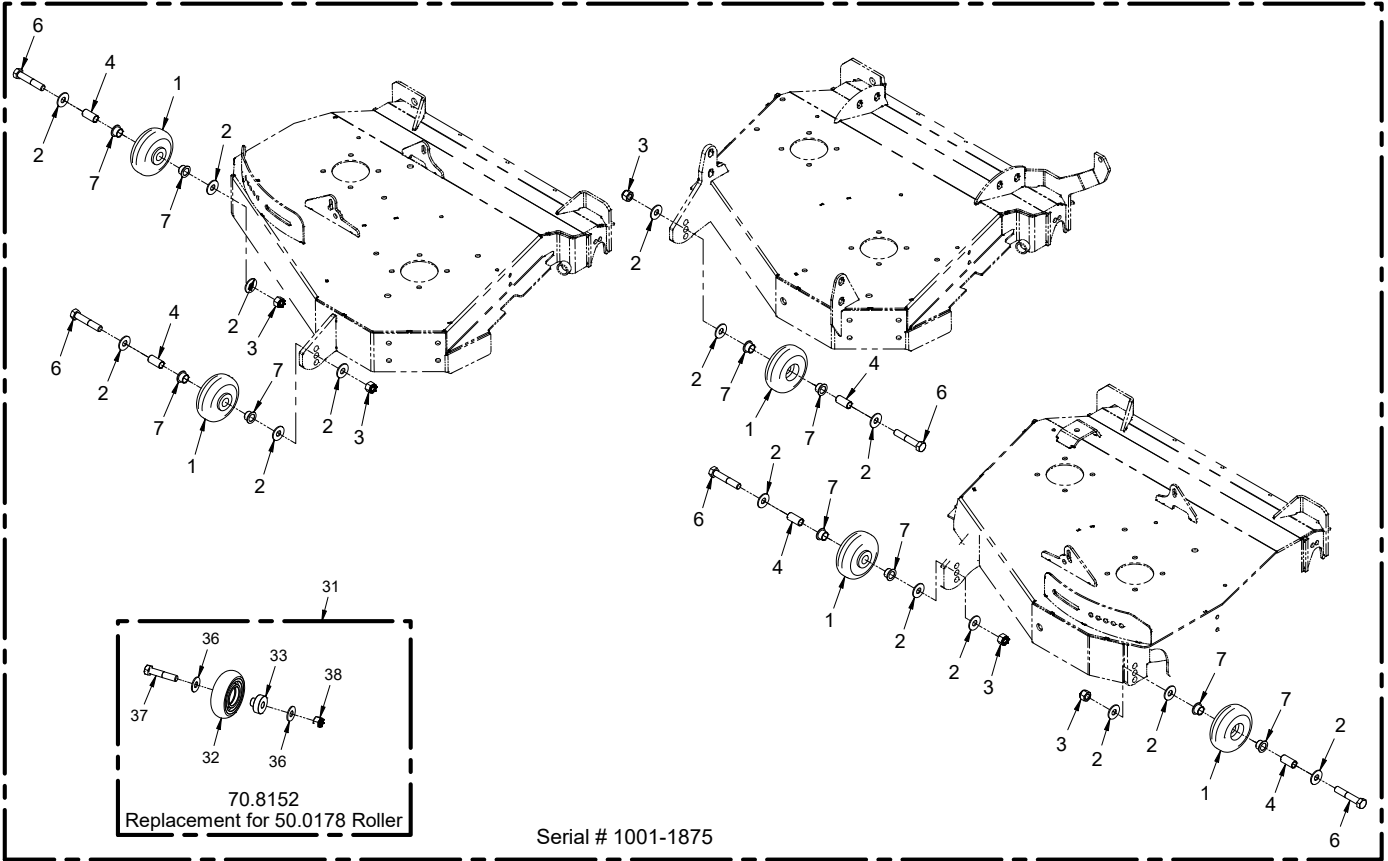
PARTS

Shields

REF.	PART NO.	DESCRIPTION	QTY.
1	60.1028	.SHIELD, DECK RIGHT	1
2	60.1033	.SHIELD, CARRIER FRAME REAR	1
3	60.1027	.SHIELD, DECK LEFT	1
4	44.0250	.SLIDE, SHIELD	2
5	60.1026	.SHIELD, CARRIER FRAME	1
6	60.1032	.SHIELD, CARRIER FRAME LEFT	1
7	99.E0046	.NUT, "U" 1/4-20 EXTRUDED	4
8	47.0127	.LATCH, RUBBER DRAW T-HANDLE	1
9	60.1029	.SHIELD, DECK HINGE RIGHT	1
10	64.1413	.BRACKET, SHIELD SPRING	3
11	90.0428	.BOLT, 1/4-20 USS X 3 1/2	3
12	41.0021	.SPRING, COMP 1/2 OD X 2-3/4 LG	3
13	60.1030	.SHIELD, DECK HINGE LEFT	1
14	95.04	.WASHER, FLAT 1/4 SAE	18
15	90.0406	.BOLT, 1/4-20 USS X 3/4	9
16	60.1031	.SHIELD, CARRIER FRAME FRONT	1
17	99.SF04	.NUT, SRF 1/4-20 USS	5
18	95.06	.WASHER, FLAT 3/8 SAE	4
19	90.0628	.BOLT, 3/8-16 USS X 3 1/2	2
20	64.1410	.BUSHING, SHIELD MOUNT	2
21	47.0213	.KNOB, 3/8-16 THRU HOLE	2
22	06.0062*	.TRIM, TRIM SEAL W/BULB X 2"	1
23	06.0062*	.TRIM, TRIM SEAL W/BULB X 5"	3
24	06.0062*	.TRIM, TRIM SEAL W/BULB X 7"	3
25	00.0192	.DECAL, V-DECAL DIE CUT BLUE	1
26	00.0062	.DECAL, DANGER SHIELD MISSING	2
27	00.0261	.DECAL, MAINTENANCE MJ (Serial # 1001-1875)	1
27	00.0398	.DECAL, MAINTENANCE MJ (Serial # 1876-)	1
28	99.A04N	.LOCKNUT, NYLON 1/4-20	3
29	99.SF06	.NUT, SRF 3/8-16 USS	2
30	99.K0072	.MACHINE SCREW, 10-24 X 1/2 ZP	3
31	00.0189	.DECAL, VENTRAC ORBITAL	1
32	99.K0105	.MACHINE SCREW, #10-32 X 3/8	4
33	05.0120	.BUMPER, NEOPRENE 10 GA - 1/4	4
34	96.04	.WASHER, LOCK 1/4	4

PARTS

ILLUSTRATED DRAWING Front Anti-Scalp Rollers



PARTS

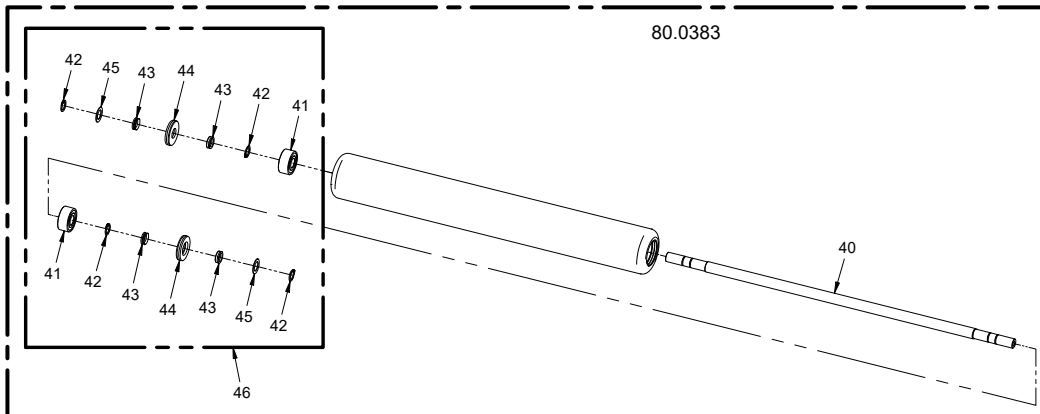
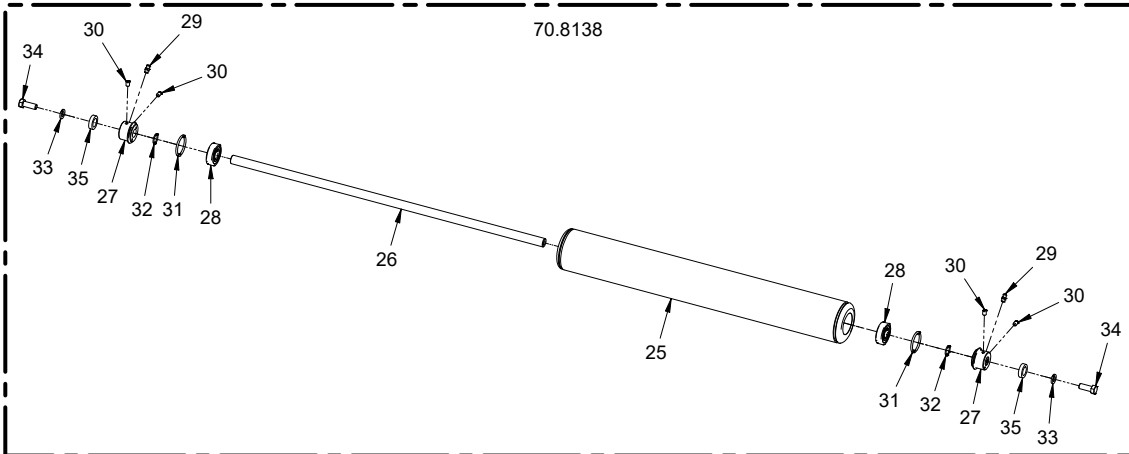
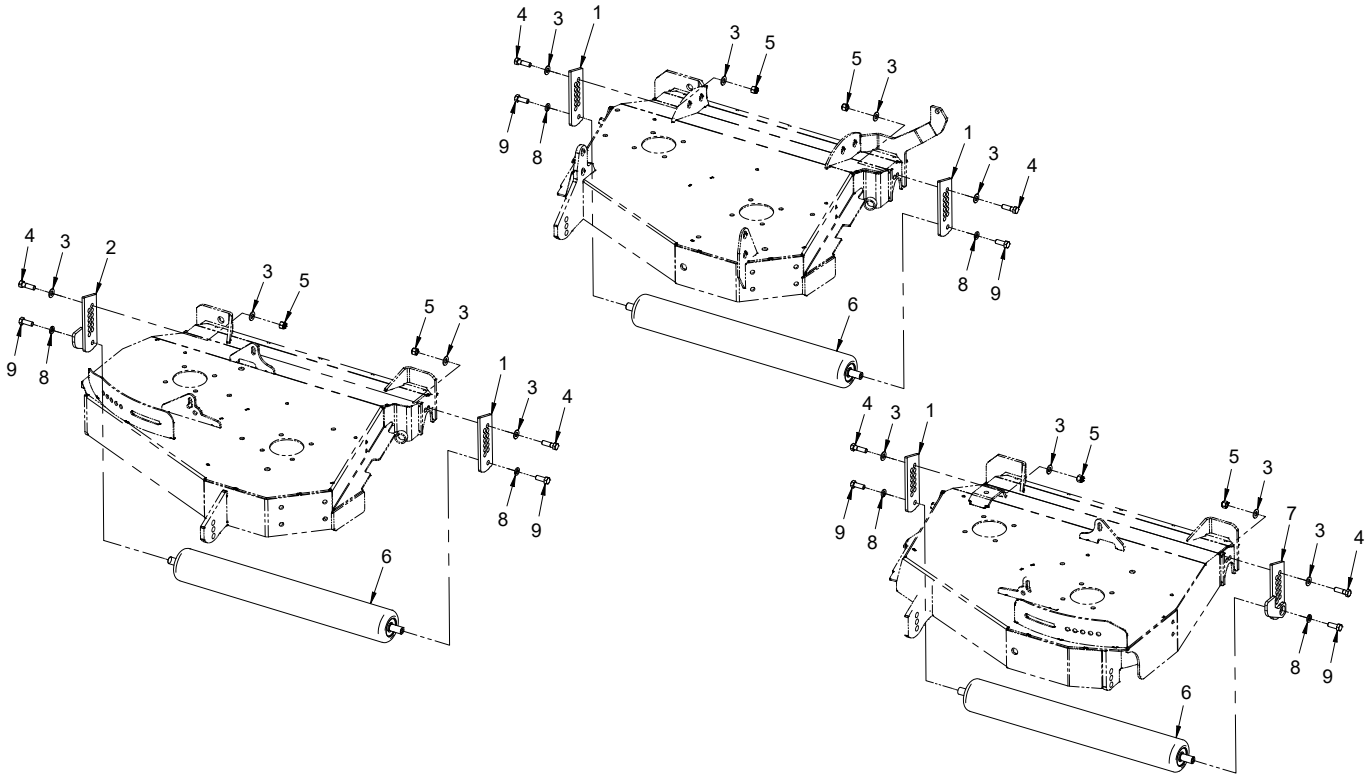
Front Anti-Scalp Rollers

REF.	PART NO.	DESCRIPTION	QTY.
1	50.0178	.ROLLER, 4" X 1.625 BLACK UHMW (Serial # 1001-1875)	5
2	94.07	.WASHER, FLAT 7/16 USS	15
3	99.A08N	.LOCKNUT, NYLON 1/2-13 USS	5
4	64.1415	.BUSHING, .495ID X5/8OD X1-9/32 SS (Serial # 1001-1875)	5
6	90.0822	.BOLT, 1/2-13 USS X 2 3/4 (Serial # 1001-1875)	5
7	85.B0088	.BUSHING, 5/8 ID X 3/4 OD X 1/2 (Serial # 1001-1875)	10
15	94.07	.WASHER, FLAT 7/16 USS	10
16	99.A08N	.LOCKNUT, NYLON 1/2-13 USS	5
17	53.0161	.WHEEL, 4" OD COMPLETE (Serial # 1876-)	5
18	50.0192	.BUSHING, ANTI-SCALP WHEEL (Serial # 1876-)	5
21	90.0820	.BOLT, 1/2-13 USS X 2-1/2 (Serial # 1876-)	5
25	55.0094	.BEARING, BALL 17 X 40MM 2RSTFP	1
26	04.0033	.SNAP RING, INT 1-9/16 BORE	1
31	70.8152	.KIT, ANTI-SCALP WHEEL MJ840	5
32	53.0161	.WHEEL, 4" OD COMPLETE	1
33	50.0192	.BUSHING, ANTI-SCALP WHEEL	1
36	94.07	.WASHER, FLAT 7/16 USS	2
37	90.0820	.BOLT, 1/2-13 USS X 2-1/2	1
38	99.A08N	.LOCKNUT, NYLON 1/2-13 USS	1

PARTS

ILLUSTRATED DRAWING

Rear Rollers



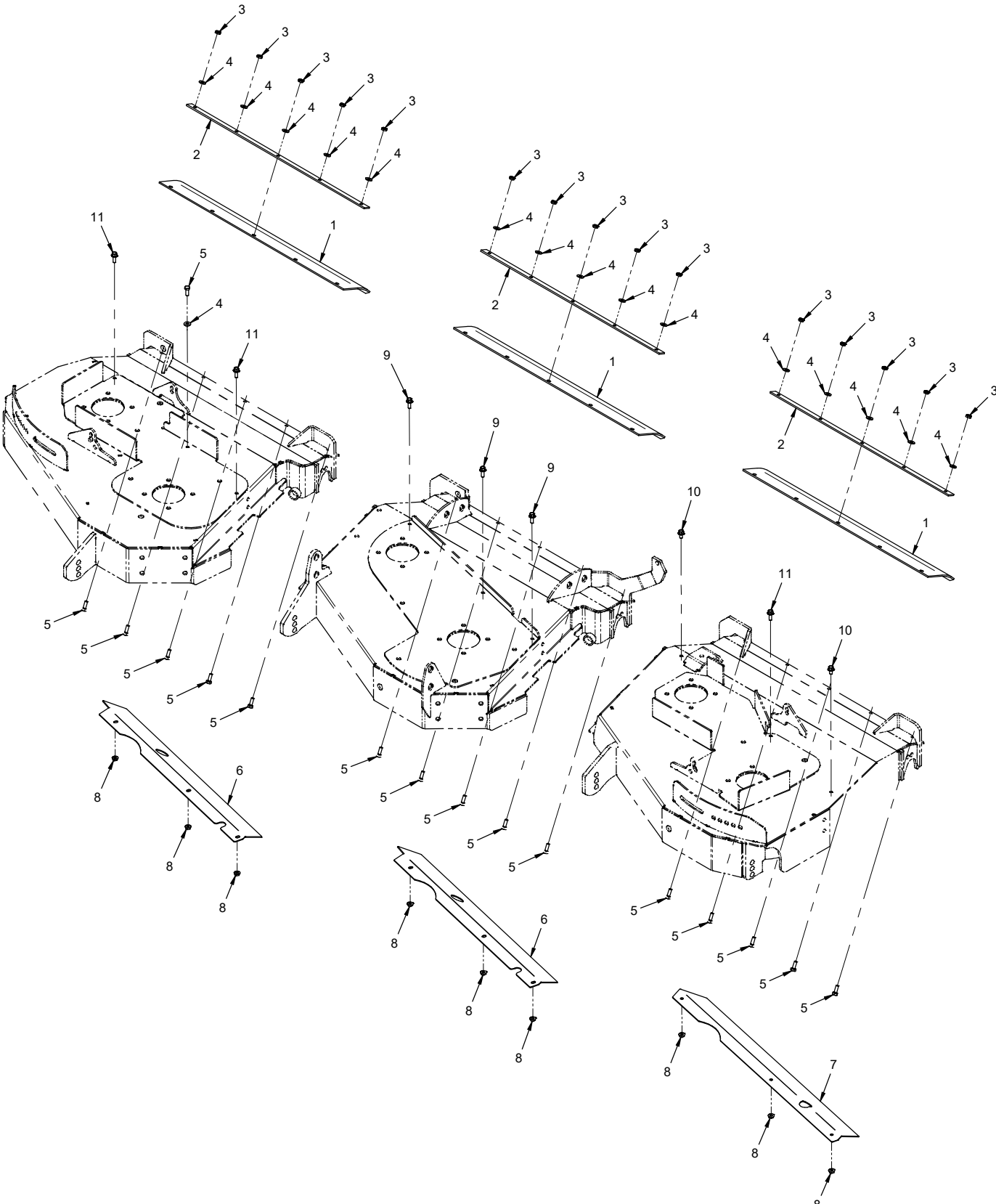
PARTS

Rear Rollers

REF.	PART NO.	DESCRIPTION	QTY.
1	64.1425	.PLATE, ROLLER HEIGHT ADJUST	4
2	64.1402	.MOUNT, ROLLER HEIGHT ADJ RIGHT	1
3	95.06	.WASHER, FLAT 3/8 SAE	12
4	90.0610	.BOLT, 3/8-16 USS X 1-1/4	6
5	99.A06N	.LOCKNUT, NYLON 3/8-16 USS	6
6	70.8138	.KIT, ROLLER ASSEMBLY MJ840 (Serial # 1001-1871)	3
6	80.0383	.ROLLER, REAR MJ840 COMPLETE (Serial # 1872-)	3
7	64.1403	.MOUNT, ROLLER HEIGHT ADJ. LEFT	1
8	96.06	.WASHER, LOCK 3/8	6
9	99.K0104	.BOLT, 3/8-24 X 1 GRD 8	6
25	80.0372	.ROLLER, REAR DECK - MJ840	1
26	42.0537	.SHAFT, REAR ROLLER	1
27	53.0135	.COLLAR, ROLLER END CAP	2
28	55.0069	.BEARING, BALL .625 IN X 40MM	2
29	29.GF0001	.GREASE FTG, 1/4 SAE ST	2
30	85.SS11	.SET SCREW, 1/4-28 X 3/8"	4
31	26.0029	.O-RING, 1-5/16 X 1-9/16 X 1/8	2
32	26.0028	.O-RING, 5/8 ID X 3/4 OD X 1/16	2
33	96.06	.WASHER, LOCK 3/8	2
34	99.K0104	.BOLT, 3/8-24 SAE X 1 GRADE 8	2
35	05.0112	.WASHER, NYLON .635ID X1OD X1/4	2
40	80.0384	.SHAFT, 80.0383 ROLLER	1
41	55.0093	.BEARING, 80.0383 ROLLER	2
42	04.0036	.SNAP RING, EXT .575 ID X .05THK	4
43	89.0101	.SEAL, 80.0383 ROLLER ENDCAP	4
44	80.0385	.ENDCAP, 80.0383 ROLLER	2
45	99.B0114	.SHIM, 5/8"X1"X .032 THK SS	2
46	80.0383-1	.KIT, OVERHAUL 80.0383 ROLLER	1

PARTS

ILLUSTRATED DRAWING Discharge Deflectors & Rear Belting



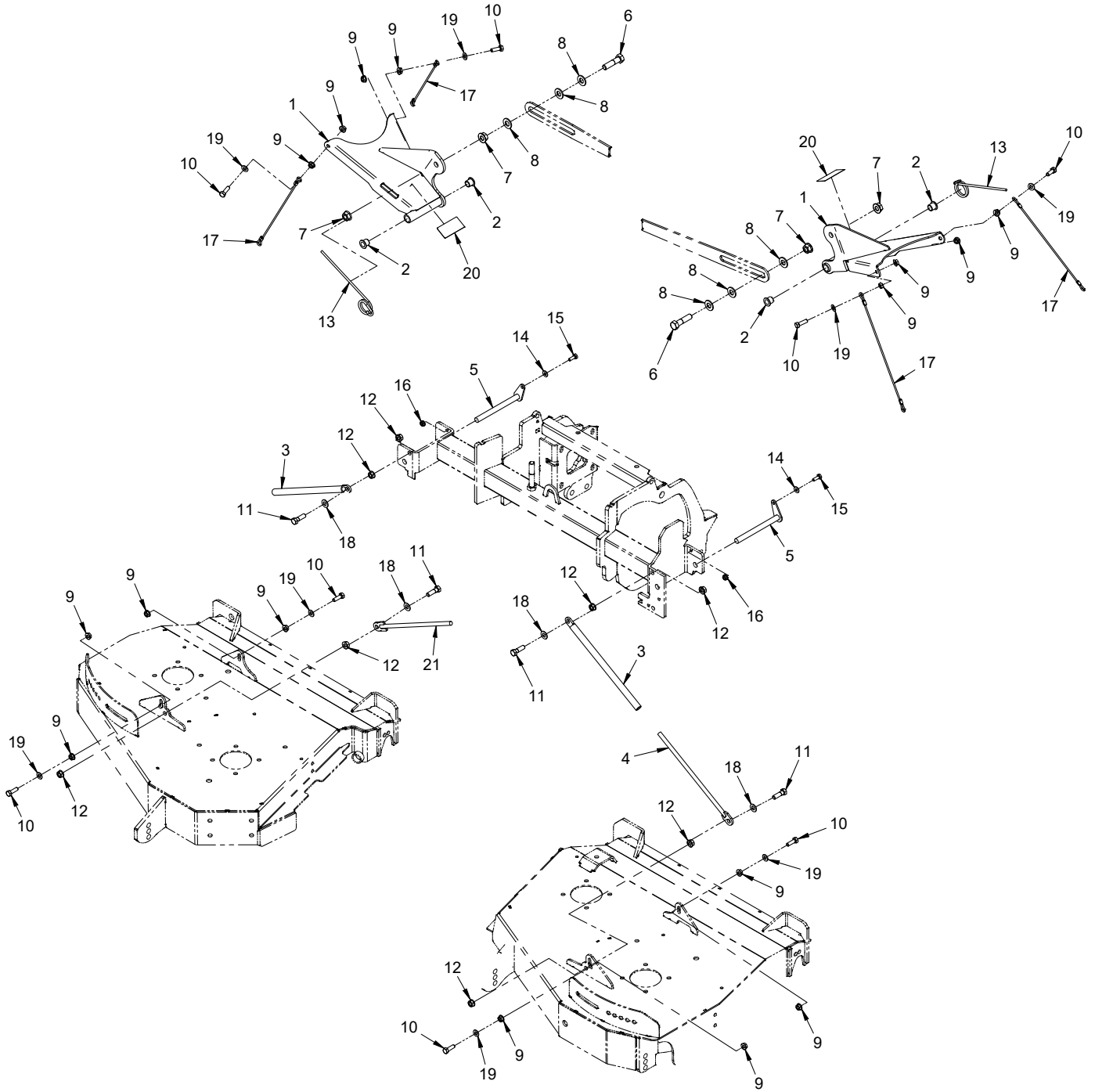
PARTS

Discharge Deflectors & Rear Belting

REF.	PART NO.	DESCRIPTION	QTY.
1	44.0251	.BELTING, REAR DISCHARGE	3
2	64.1422	.CLAMP, REAR BELTING	3
3	99.A04	.LOCKNUT, STOVER 1/4-20 USS	15
4	95.04	.WASHER, FLAT 1/4 SAE	16
5	90.0406	.BOLT, 1/4-20 USS X 3/4	16
6	60.1035	.DEFLECTOR, DECK DISCHARGE R/C	2
7	60.1036	.DEFLECTOR, DECK DISCHARGE LEFT	1
8	99.SF04	.NUT, SRF 1/4-20 USS	9
9	99.SF0404	.BOLT, SRF 1/4-20 X 1/2 (Serial # 1001-2059)	3
9	99.SF0406	.BOLT, SRF 1/4-20 X 3/4 (Serial # 2060-)	3
10	99.SF0404	.BOLT, SRF 1/4-20 X 1/2	2
11	99.SF0404	.BOLT, SRF 1/4-20 X 1/2 (Serial # 1001-2339)	3
11	99.SF0406	.BOLT, SRF 1/4-20 X 3/4 (Serial # 2340-)	3

PARTS

ILLUSTRATED DRAWING Deck Wing Lift Arms



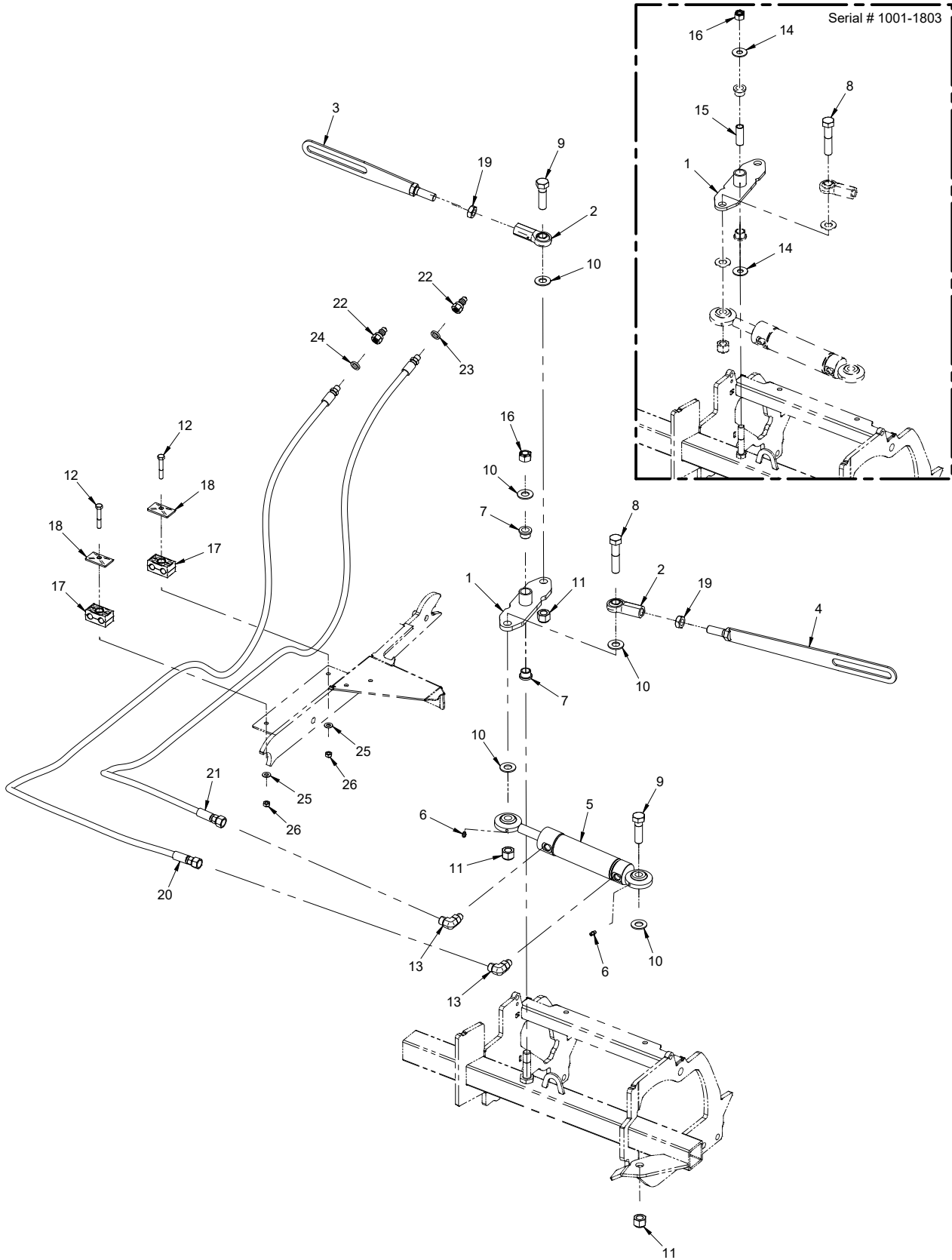
PARTS

Deck Wing Lift Arms

REF.	PART NO.	DESCRIPTION	QTY.
1	62.1300	LIFT ARM, OUTSIDE DECK WING (Serial # 1001-1875)	2
1	62.1427	LIFT ARM, OUTSIDE DECK WING (Serial # 1876-)	2
2	85.B0027	BUSHING, 1/2 ID X 5/8 OD X 5/8	4
3	64.1406	LIMITER, DECK HINGE UPPER	2
4	64.1405	LIMITER, DECK HINGE LOWER L	1
5	64.1404	PIN, LIFT ARM PIVOT	2
6	90.0816	BOLT, 1/2-13 USS X 2	2
7	99.SF08	NUT, SRF 1/2-13 USS	4
8	95.08	WASHER, FLAT 1/2 SAE	6
9	99.SF05	NUT, SRF 5/16-18 USS	16
10	90.0508	BOLT, 5/16-18 USS X 1	8
11	90.0610	BOLT, 3/8-16 USS X 1 1/4	4
12	99.SF06	NUT, SRF 3/8-16 USS	8
13	41.0111	SPRING, TORSION LH 1-3/16 ID X 7	2
14	95.04	WASHER, FLAT 1/4 SAE	2
15	90.0406	BOLT, 1/4-20 USS X 3/4	2
16	99.SF04	NUT, SRF 1/4-20 USS	2
17	45.0047	CABLE, 1/8 X 12 SS W/3/8 LOOPS (Serial # 1001-2339)	4
17	45.0055	CABLE, 1/8 X 12 SS STAMPED END (Serial # 2340-)	4
18	95.06	WASHER, FLAT 3/8 SAE	4
19	95.05	WASHER, FLAT 5/16 SAE	8
20	00.0218	DECAL, WARNING PINCH POINT	2
21	64.1405	LIMITER, DECK HINGE LOWER (Serial # 1001-1221)	1
21	64.1658	LIMITER, DECK HINGE LOWER R (Serial # 1222-)	1

PARTS

ILLUSTRATED DRAWING Deck Wing Lift Arm Hydraulics



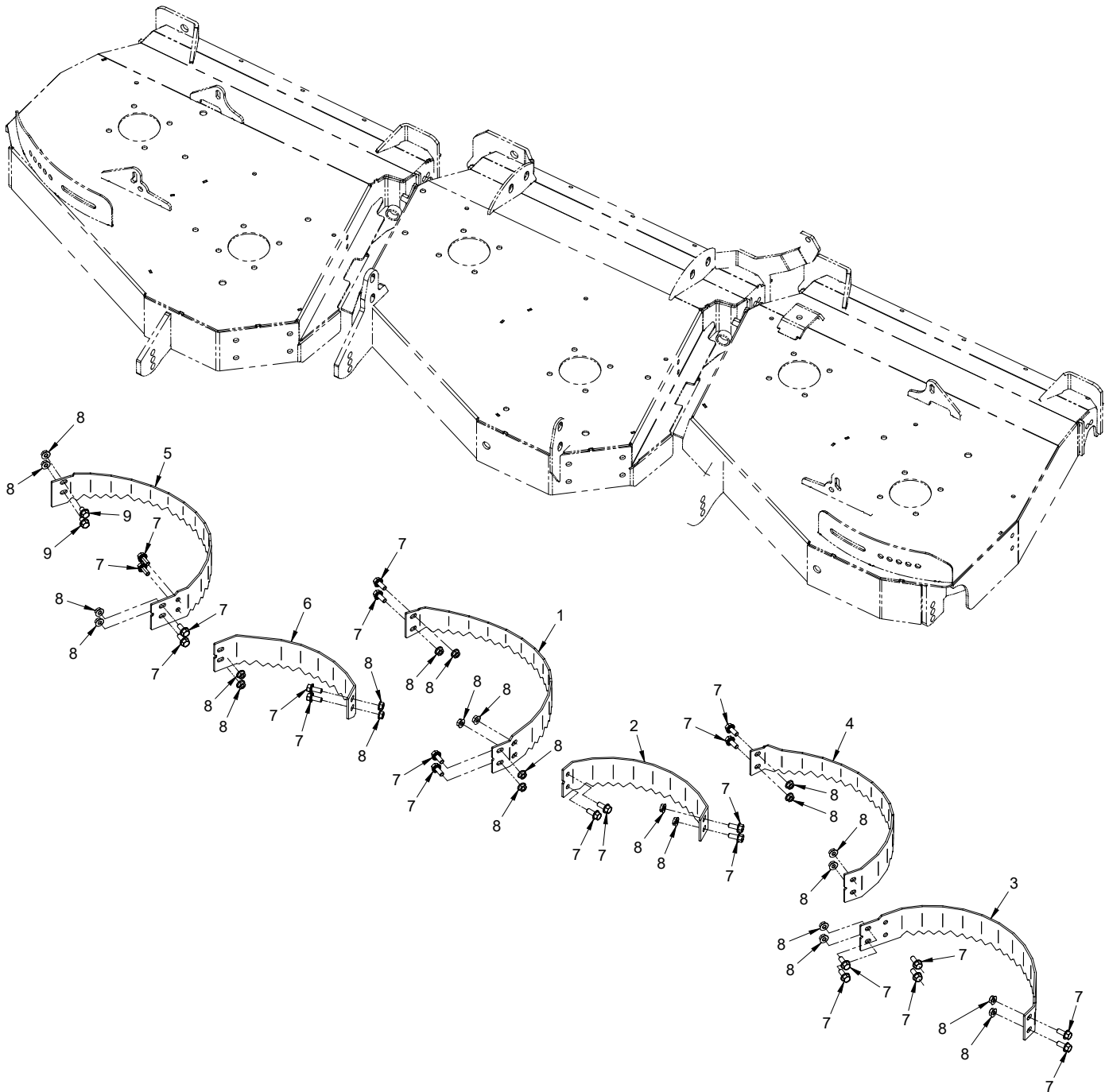
PARTS

Deck Wing Lift Arm Hydraulics

REF.	PART NO.	DESCRIPTION	QTY.
1	42.0532	.PIVOT, LIFT LINK MJ (Serial # 1001-1803)	1
1	42.0574	.PIVOT, LIFT LINK MJ (Serial # 1804-)	1
2	43.010	.ROD END, 5/8 SPHERICAL	2
3	42.0531	.LINK, LIFT ARM RIGHT DECK	1
4	42.0530	.LINK, LIFT ARM LEFT DECK	1
5	23.0130	.CYLINDER, 1-1/2" X 5"	1
6	29.GF0001	.GREASE FTG, 1/4 SAE ST	2
7	85.B0065	.BUSHING, 5/8 IDX13/16 ODX5/8LG	2
8	91.1024	.BOLT, 5/8-18 SAE X 3 (Serial # 1001-1803)	1
8	91.1026	.BOLT, 5/8-18 SAE X 3-1/4 (Serial # 1804-)	1
9	91.1018	.BOLT, 5/8-18 SAE X 2 1/4	2
10	95.10	.WASHER, FLAT 5/8 SAE (Serial # 1001-1803)	4
10	95.10	.WASHER, FLAT 5/8 SAE (Serial # 1804-)	5
11	99.A10NFN	.LOCKNUT, NYLON 5/8-18 SAE ZP	3
12	90.0516	.BOLT, 5/16-18 USS X 2	2
13	25.FF6801-06-06	.FITTING, 90 - 6 MFF X 6 MB	2
14	94.07	.WASHER, FLAT 7/16 USS (Serial # 1001-1803)	2
15	64.1427	.BUSHING, .495 ID X 5/8 OD X 1-3/4 SS (Serial # 1001-1803)	1
16	99.A08N	.LOCKNUT, NYLON 1/2-13 USS (Serial # 1001-1803)	1
16	99.A10	.LOCKNUT, STOVER 5/8-11 USS (Serial # 1804-)	1
17	44.0256	.CLAMP, HYD HOSE 12.7MM ID GRN	2
18	44.0229	.COVER PLATE, 2D GROUP	2
19	99.E0011	.NUT, JAM 5/8 SAE	2
20	20.0284	.HOSE ASM, 1/4 X 73 SAE 100R17	1
21	20.0285	.HOSE ASM, 1/4 X 66 SAE 100R17	1
22	23.0104	.COUPLER, HYDRAULIC QUICK - 1/4 MALE	2
23	05.0117	.WASHER, .544 ID X .817 X .14 YEL	1
24	05.0116	.WASHER, .544 ID X .817 X .14 RED	1
25	95.05	.WASHER, FLAT 5/16 SAE	2
26	99.A05	.LOCKNUT, STOVER 5/16-18 USS	2

PARTS

ILLUSTRATED DRAWING 70.8087 Mulching Kit



PARTS

70.8087 Mulching Kit

REF.	PART NO.	DESCRIPTION	QTY.
1	64.1418	.RING, RIGHT MULCH -CENTER DECK	1
2	64.1419	.RING, LEFT MULCH - CENTER DECK	1
3	64.1421	.RING, LEFT MULCH - LEFT DECK	1
4	64.1420	.RING, RIGHT MULCH - LEFT DECK	1
5	64.1416	.RING, RIGHT MULCH - RIGHT DECK	1
6	64.1417	.RING, LEFT MULCH - RIGHT DECK	1
7	99.SF0506	.BOLT, SRF 5/16-18 USS X 3/4	22
8	99.SF05	.NUT, SRF 5/16-18 USS	24
9	99.SF0504	.BOLT, SRF 5/16-18USS X 1/2	2

WARRANTY



LIMITED WARRANTY - VENTRAC COMMERCIAL EQUIPMENT

Venture Products, Inc., (henceforth referred to as V.P.I.) warrants on the terms and conditions herein, that it will repair, replace, or adjust any part manufactured by Venture Products Inc., and found by Venture Products, Inc., to be defective in material and/or workmanship during the applicable warranty term.

All Ventrac commercial equipment purchased and registered on or after January 1, 2019 will carry a 2-year commercial warranty. The warranty period begins on the date of original customer purchase:

Ventrac Commercial Equipment	Warranty Term
2100 SSV & Attachments	2-year
3000 Series Tractors & Attachments	2-year
4000 Series Tractors & Attachments	2-year

All Ventrac add-on kits and accessories such as: 3-point hitch, 12V front & rear power outlets, foot pedal, dual wheel kit, etc., will be covered under the above warranty periods provided they are installed by an Authorized Ventrac Dealer. This warranty may be transferred and will carry the remainder of the warranty starting from the original purchase/registration date with the dealership and/or V.P.I.

The engine warranty is covered by its respective engine manufacturer. Please refer to the engine manufacturer's warranty statement that is included in the owner's manual.

For warranty consideration on Ventrac commercial equipment, including any defective part, must be returned to an Authorized Ventrac Dealer within the warranty period. The warranty shall extend to the cost to repair or replace (as determined by V.P.I.) the defective part. The expense of pickup and delivery of equipment, service call drive time or any transportation expense incurred for warranty repair is the sole responsibility of the owner and is not covered under warranty by Ventrac and/or V.P.I. Ventrac and V.P.I.'s responsibility in respect to claims is limited to making the required repairs or replacements, and no claim of breach of warranty shall be cause for cancellation or rescission of the contract of sale of any Ventrac equipment. Proof of purchase may be required by the dealer to substantiate any warranty claim. Only warranty work performed and submitted by an Authorized Ventrac Dealer may be eligible for warranty credit.

This warranty extends only to Ventrac commercial equipment operated under normal conditions and properly serviced and maintained. The warranty expressly does NOT cover: (a) any defects, damage or deterioration due to normal use, wear and tear, or exposure; (b) normal maintenance services, such as cleaning, lubrication, oil change; (c) replacement of service items, such as oil, lubricants, spark plugs, belts, rubber hoses, bearings or other items subject to normal service replacement; (d) damage or defects arising out of, or relating to abuse, misuse, neglect, alteration, negligence or accident; (e) repair or replacement arising from operation of, or use of the equipment which is not in accordance with operating instructions as specified in the operator's manual or other operational instructions provided by V.P.I.; (f) repair or replacement arising as a result of any operation from Ventrac equipment that has been altered or modified so as to, in the determination of V.P.I., adversely affect the operation, performance or durability of the equipment or that has altered, modified or affected the equipment so as to change the intended use of the product; (g) repair or replacement necessitated by the use of parts, accessories or supplies, including gasoline, oil or lubricants, incompatible with the equipment or other than as recommended in the operator's manual or other operational instructions provided by V.P.I.; (h) repairs or replacements resulting from parts or accessories which have adversely affected the operation, performance or durability of the equipment; or (i) damage or defects due to or arising out of repair of Ventrac equipment by person or persons other than an authorized Ventrac service dealer or the installation of parts other than genuine Ventrac parts or Ventrac recommended parts.

WARRANTY



LIMITED WARRANTY - VENTRAC COMMERCIAL EQUIPMENT

The sole liability of V.P.I. with respect to this warranty shall be the repair and replacement as set forth herein. V.P.I. shall have no liability for any other cost, loss, or damage. In particular V.P.I. shall have no liability or responsibility for: (i) expenses relating to gasoline, oil, lubricants; (ii) loss, cost or expense relating to transportation or delivery of turf equipment from the location of owner or location where used by owner to or from any Authorized Ventrac Dealer; (iii) travel time, overtime, after hours' time or other extraordinary repair charges or charge relating to repairs or replacements outside of normal business hours at the place of business of an Authorized Ventrac Dealer; (iv) rental of like or similar replacement equipment during the period of any warranty repair or replacement work; (v) any telephone or telegram charges; (vi) loss or damage to person or property other than that covered by the terms of this warranty; (vii) any claims for lost revenue, lost profit or additional cost or expense incurred as a result of a claim of breach of warranty; or (viii) attorney's fees.

The remedies of buyer set forth herein are exclusive and are in lieu of all other remedies. The liability of V.P.I., whether in contract, tort, under any warranty, or otherwise, shall not extend beyond its obligation as set forth herein. V.P.I. shall not be liable for cost of removal or installation nor shall V.P.I. be responsible for any direct, indirect, special or consequential damages of any nature. In no event shall V.P.I. be liable for any sum in excess of the price received for the goods for which liability is claimed.

There are no representations or warranties which have been authorized to the buyer of the Ventrac commercial equipment other than set forth in this warranty. Any and all statements or representations made by any seller of this equipment, including those set forth in any sales literature or made orally by any sales representative, are superseded by the terms of this warranty. Any affirmation of fact or promise made by V.P.I. or any of its representatives to the buyer which relates to the goods that are the subject to this warranty shall not be regarded as part of the basis of the bargain and shall not be deemed to create any express warranty that such goods shall conform to the affirmation or promise.

No employee, distributor, or representative is authorized to change the foregoing warranties in any way or grant any other warranty on behalf of V.P.I.

Some states do not allow limitations on how long an implied warranty lasts or allow the exclusion on limitation of incidental or consequential damages, so the above limitation or exclusion may not apply to you.

This warranty gives you specific legal rights, and you may also have other rights which vary from state to state.

This warranty applies to all Ventrac commercial equipment sold by Venture Products Inc.