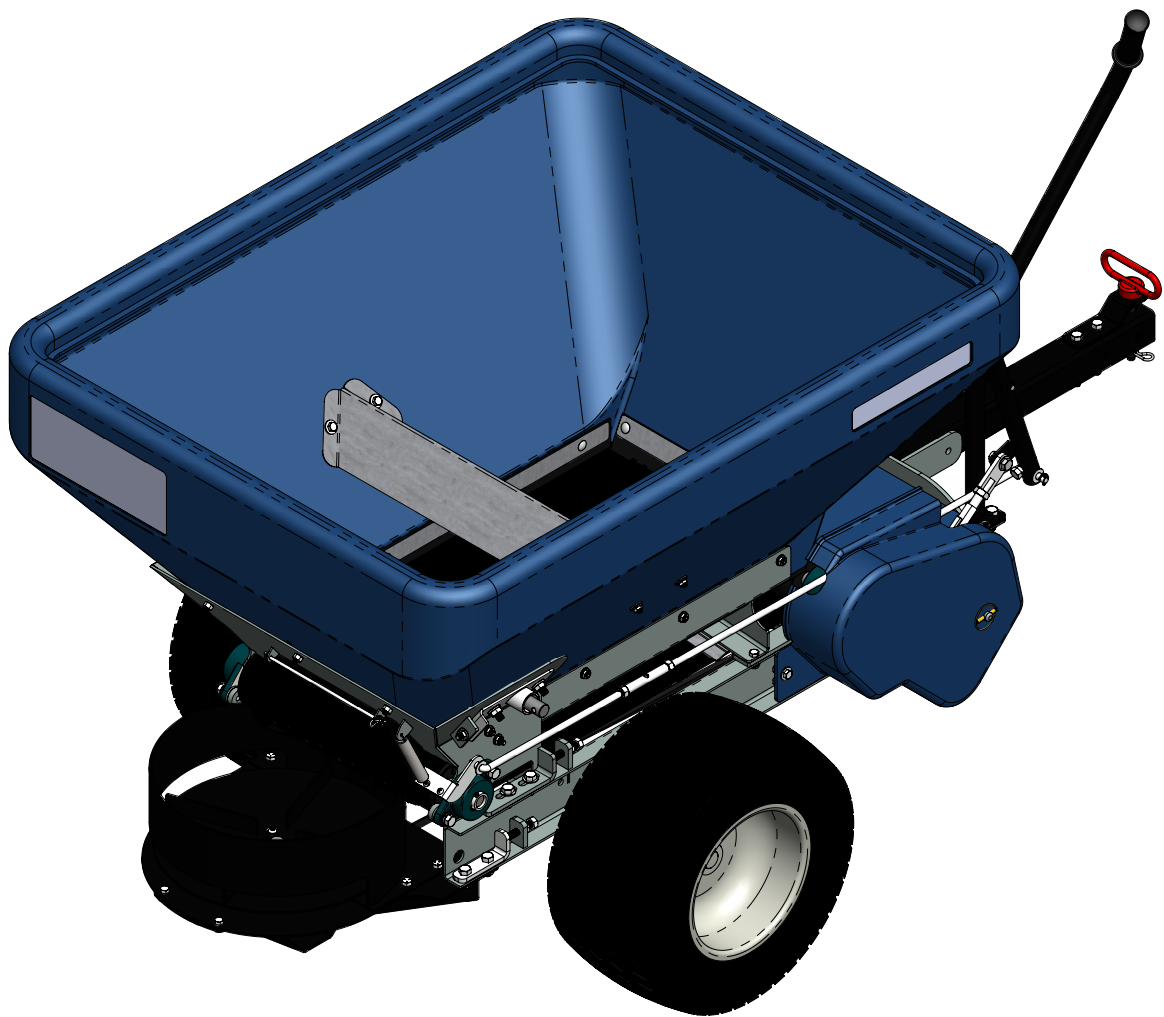


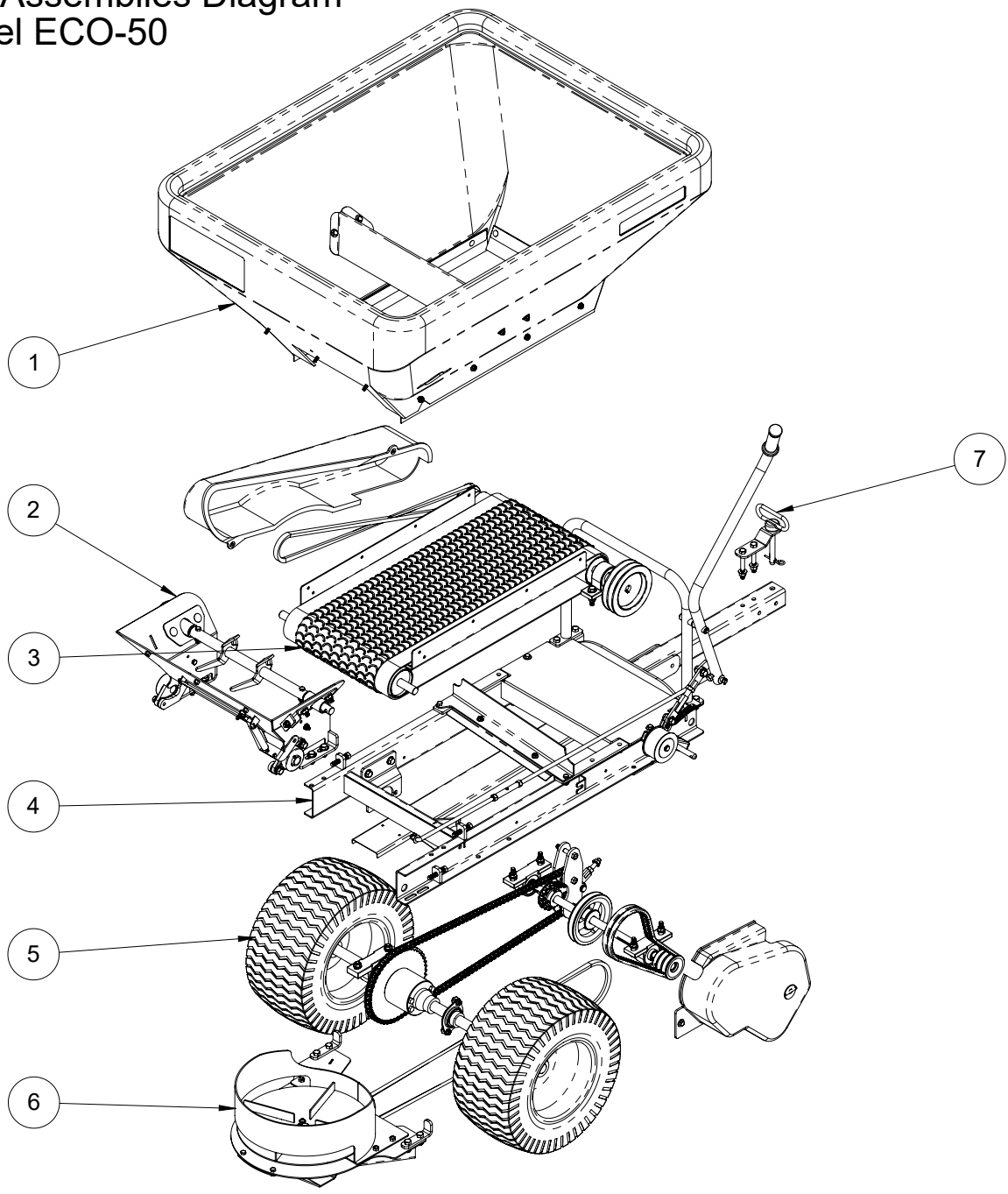
APPLICATOR ECOLAWN

PARTS LIST

Model ECO-50

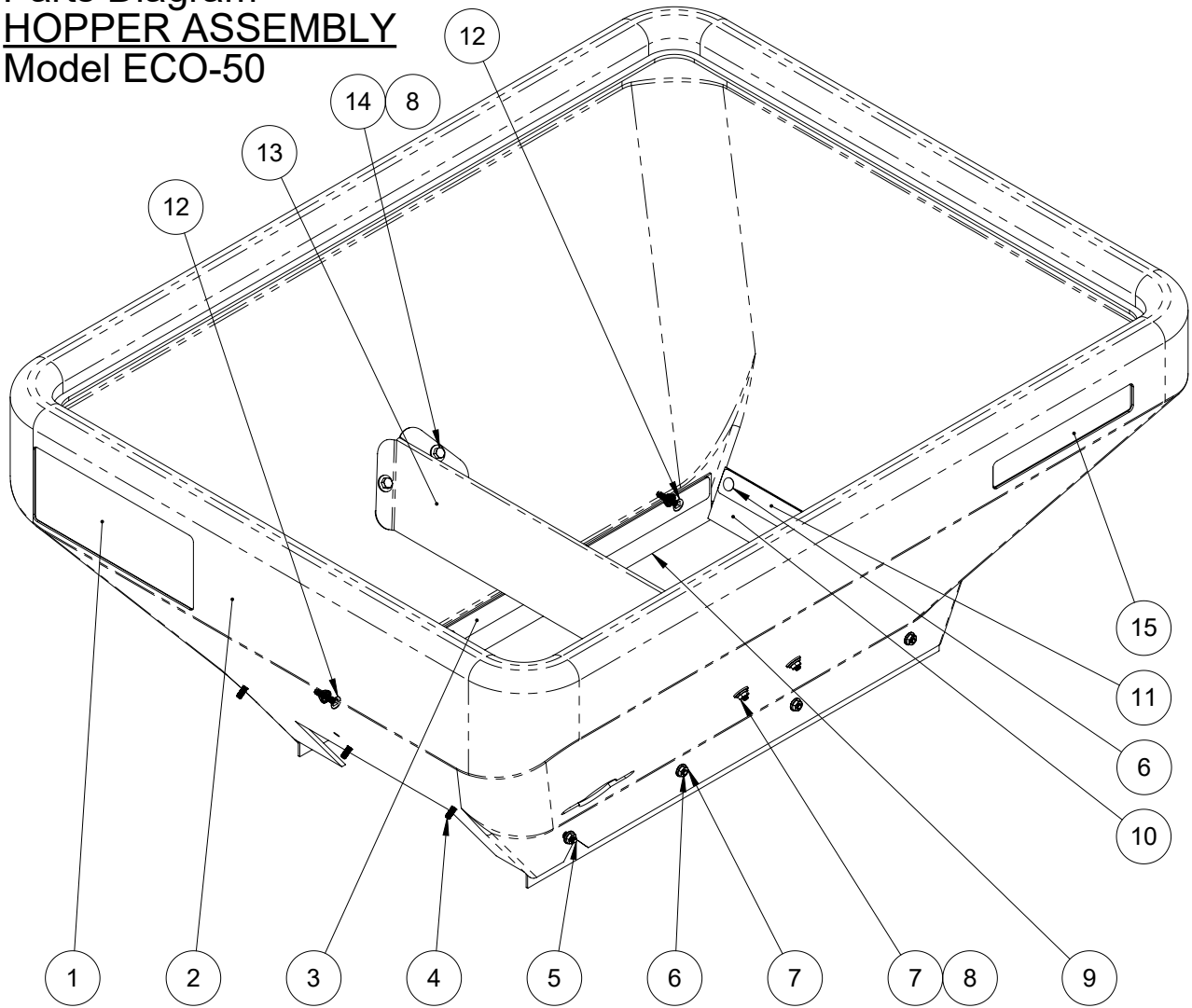


Sub-Assemblies Diagram Model ECO-50



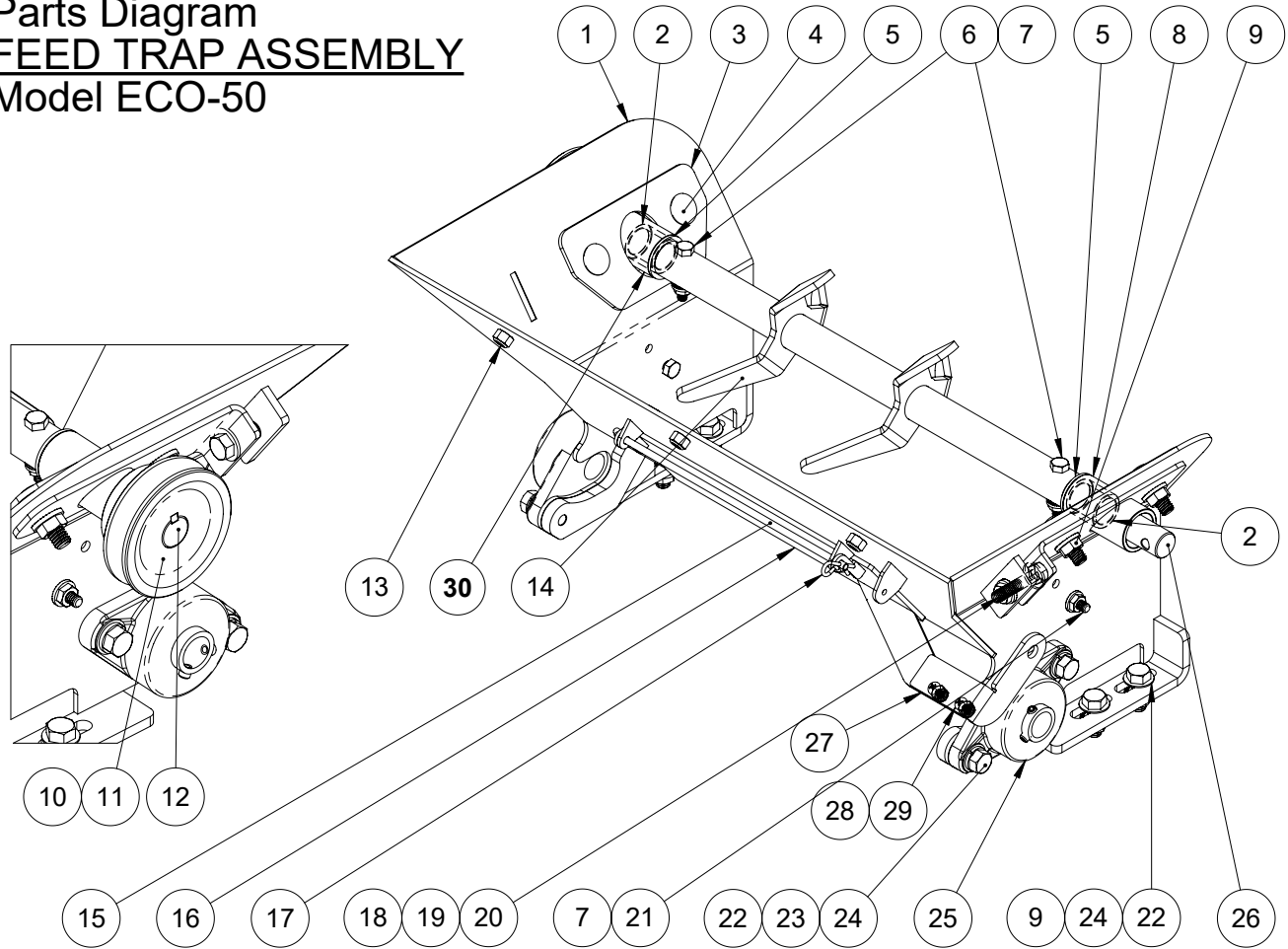
ITEM #	ASSEMBLY DESCRIPTION	REFERENCE SHEET
1	HOPPER ASSEMBLY	2
2	FEED TRAP ASSEMBLY	3
3	CONVEYOR ASSEMBLY	4
4	FRAME ASSEMBLY	5
5	DRIVE ASSEMBLY	6
6	PLATE EJECTION ASSEMBLY	7
7	HITCH PIN OPTION	8

Parts Diagram
HOPPER ASSEMBLY
Model ECO-50



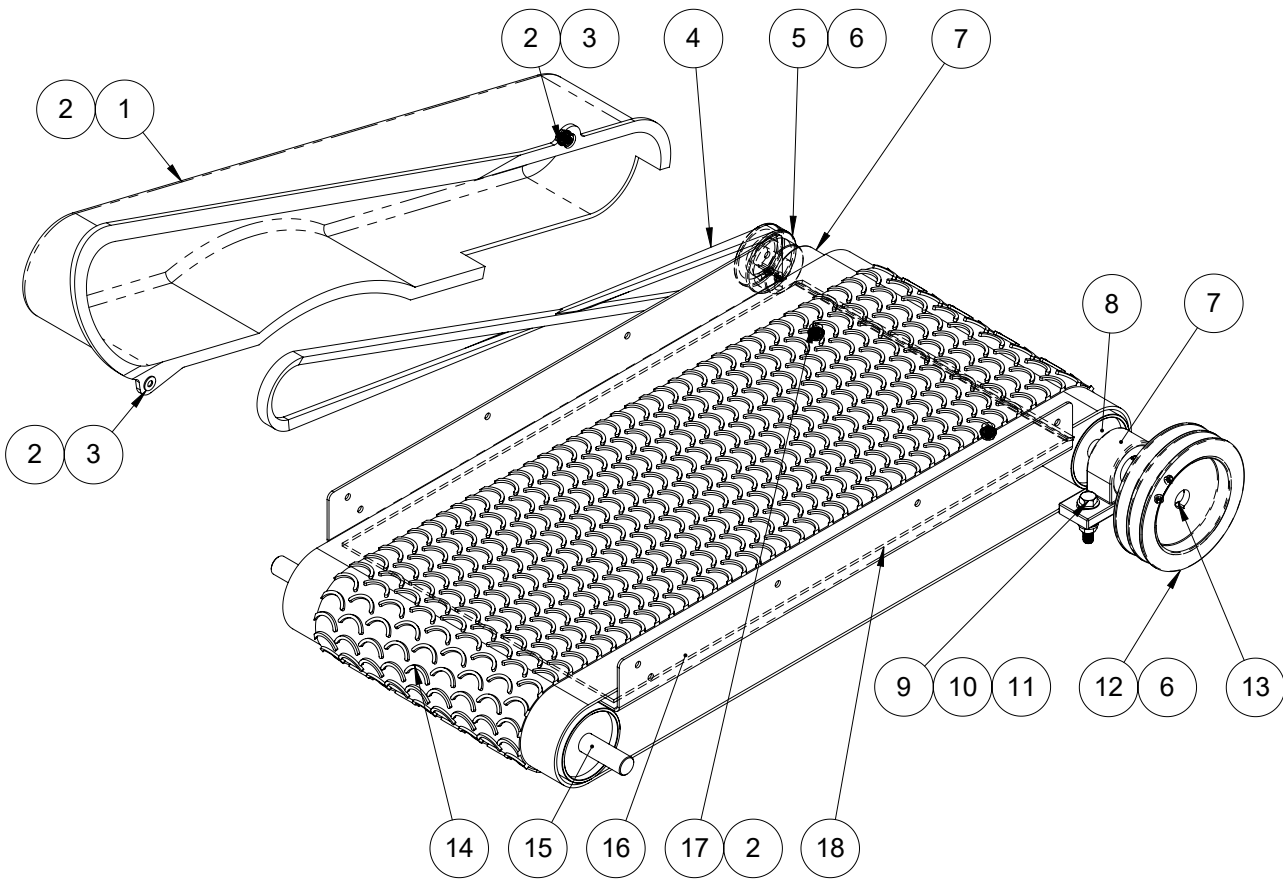
ITEM #.	PART #	DESCRIPTION	QTY
1	X-0255	HOPPER STICKER / #1 TOP DRESSER	1
2	C-0159	HOPPER ECO (All new model)	1
3	D-0185	LONG FLAP CLIP (B1200COSC 650MM X 60MM)	2
4	Q-0155	MACH SCREW 1/4-20 X 3/4"	3
5	Q-0016	CARRIAGE BOLT 1/4-20 X 1"	1
6	Q-0064	CARRIAGE BOLT 1/4-20 X 3/4"	8
7	Q-0040	SERRATED FLANGE HEX LOCKNUT 1/4-20	15
9	U-0157	RUBBER FLAP 65 CM X 6 CM	2
10	U-0158	RUBBER FLAP 35 CM X 6 CM	1
11	D-0184	SHORT FLAP CLIP (B1200COS 350MM X 60MM)	1
12	Q-0065	CARRIAGE BOLT 1/4-20 X 1 1/4"	2
13	D-0113	CENTRAL WEIGHT DEFLECTOR	1
14	Q-0015	HEX BOLT 1/4-20 X 3/4"	4
15	X-0054	HOPPER STICKER ECO 50	1

Parts Diagram
FEED TRAP ASSEMBLY
Model ECO-50



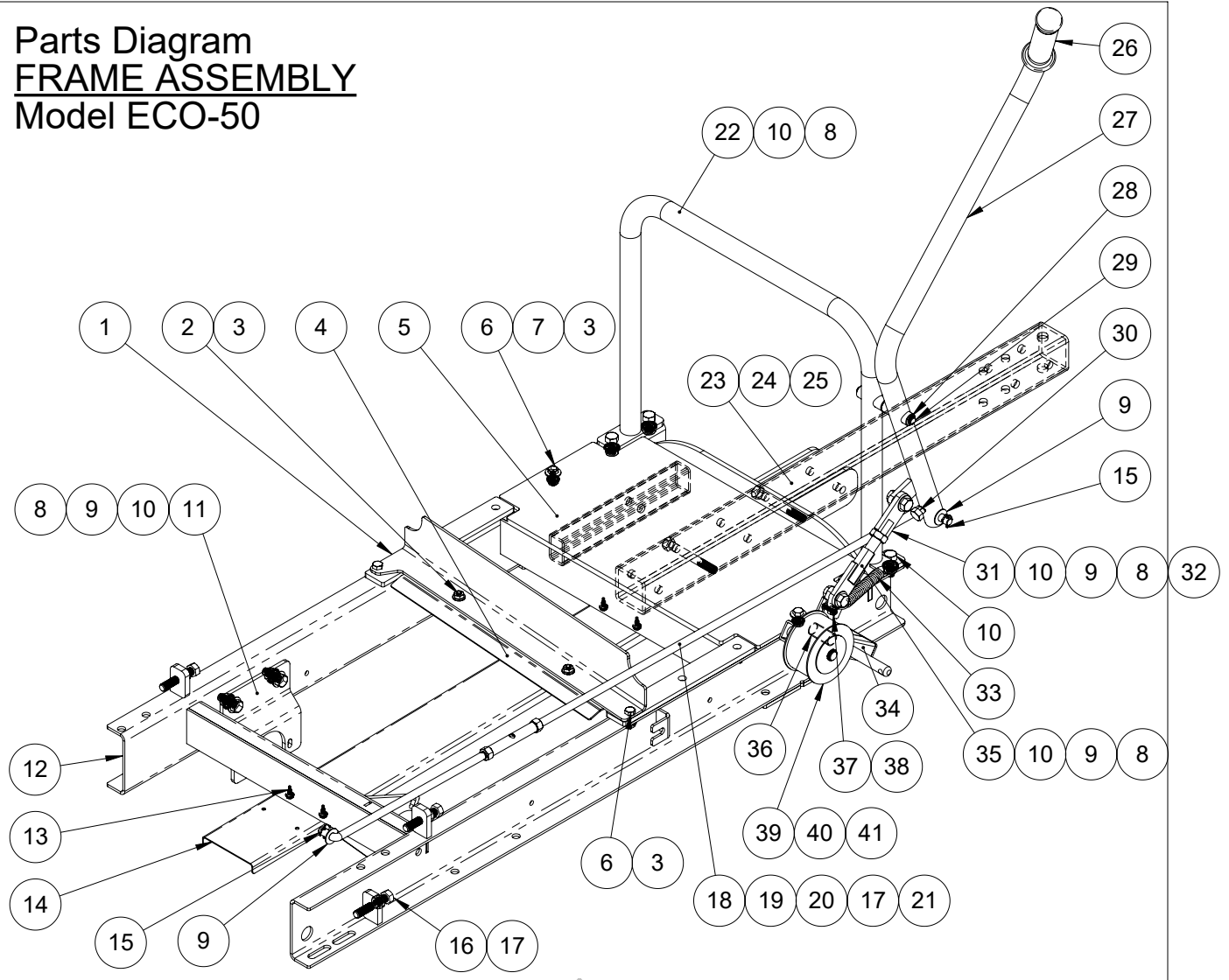
ITEM #	PART #	DESCRIPTION	QTY
1	S-0153	FEED TRAP SUPPORT	1
2	C-0021	OILITE BUSHING OD 1 x ID 3/4 x 1"LG	2
3	D-0194	PLATE SUPPORT-MIXER BLENDER	2
4	Q-0156	CARRIAGE BOLT 3/8 X 1-1/4"	4
5	Q-0063	FLAT WASHER 3/4" - NYLON	2
6	Q-0157	HEX BOLT 1/4-20 X 1 1/2"	2
7	Q-0040	SERRATED FLANGE HEX LOCKNUT 1/4-20	4
8	S-0154	MIXER-BLENDER LEFT SUPPORT	1
9	Q-0041	SERRATED FLANGE HEX LOCKNUT 3/8-16	8
10	U-0011	KEY STOCK 3/16" X 3/16" X 1 1/4"LGT	1
11	C-0027	SINGLE GROOVE V-BELT PULLEY MA30-3/4	1
12	U-0155	MIXER BLENDER-KEYED SHAFT	1
13	Q-0032	NYLOCK 1/4-20	3
14	S-0018	MIXER-BLENDER	1
15	U-0057	FEED TRAP ROD / E-150 /050	1
16	S-0157	FEED TRAP ECO-150	1
17	Q-0153	HAIRPIN COTTER PIN Ø3/32" x 1 3/16"	1
18	Q-0009	FLAT WASHER 1/4"	17
19	Q-0043	SERRATED FLANGE HEX LOCKNUT 5/16-18	2
20	Q-0151	HEX BOLT 5/16-18 X 1.5"	2
21	Q-0015	HEX BOLT 1/4-20 X 3/4"	2
22	Q-0011	FLAT WASHER 3/8"	8
23	Q-0031	LOCK WASHER 3/8"	4
24	Q-0019	HEX BOLT 3/8-16 x 1"	8
25	C-0009	FLANGE BEARING 3/4	2
26	U-0096	MIXER BLENDER-SHAFT	1
27	D-0126	FEED TRAP BRACKET-ECO50	1
28	Q-0025	NYLOCK 10-24	2
29	Q-0039	ROUND HEAD SCREW 10-24 x 3/4"	2
30	S-0155	MIXER-BLENDER RIGHT SUPPORT	1

Parts Diagram
CONVEYOR ASSEMBLY
 Model ECO-50



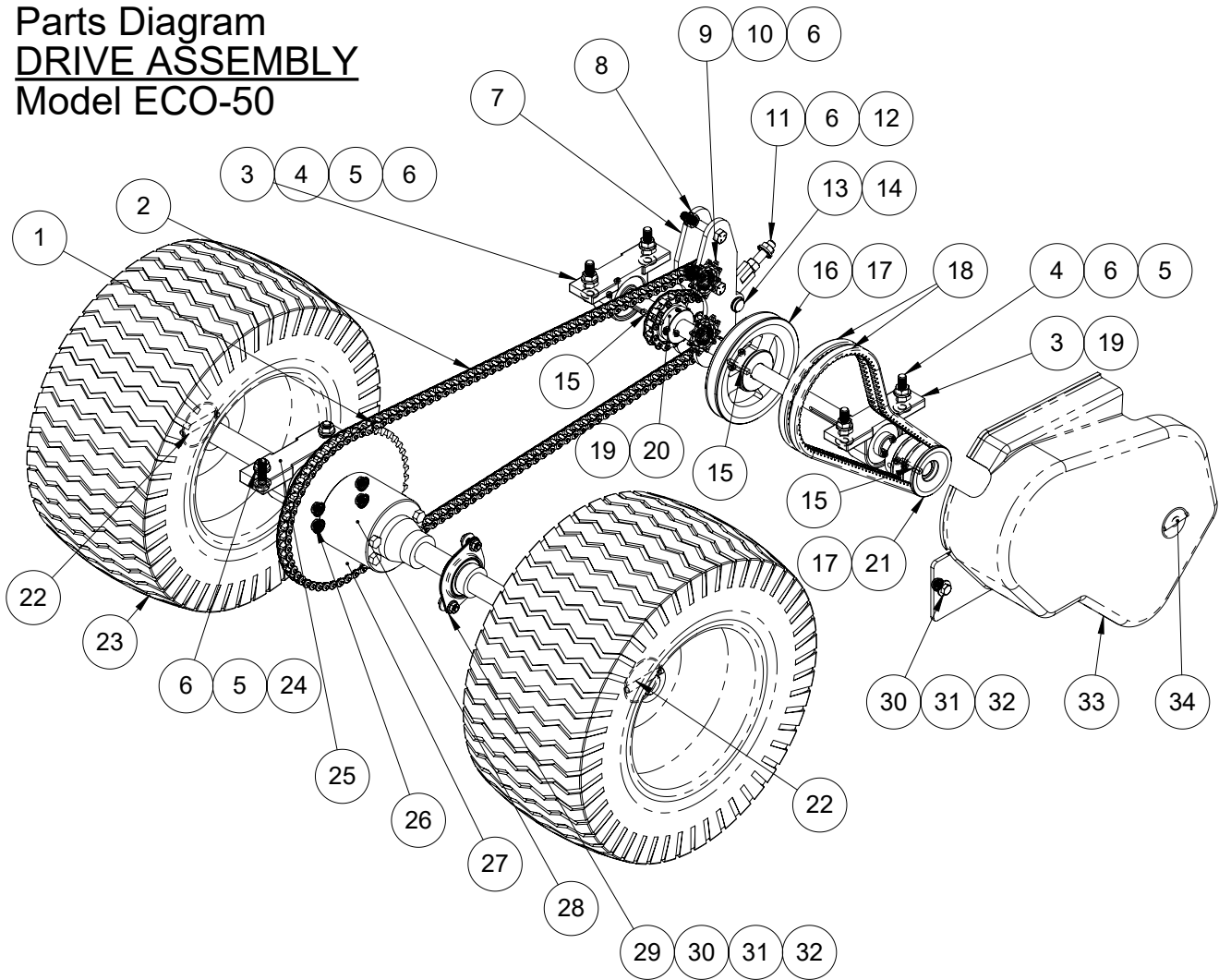
ITEM #	PART #	DESCRIPTION	Q'TY
1	C-0153	PULLEYS AND BELTS GUARD	1
2	Q-0040	SERRATED FLANGE HEX LOCKNUT 1/4-20	4
3	Q-0005	FLAT WASHER 3/16" X 1/16"HS	4
4	C-0160	V-BELT A55 (SMOOTH)	1
5	C-0026	SINGLE GROOVE V-BELT PULLEY MA25-3/4	1
6	Q-0037	SET-SCREW 5/16-18 X 1/4"	4
7	C-0048	PILLOW BLOCK 3/4	2
8	S-0168	TEXTURED ROLLER DRIVE	1
9	Q-0044	HEX BOLT 3/8-16 X 1 3/4"	4
10	Q-0041	SERRATED FLANGE HEX LOCKNUT 3/8-16	4
11	Q-0011	FLAT WASHER 3/8"	4
12	C-0005	DOUBLE GROOVE V-BELT PULLEY 2MA53-3/4	1
13	U-0011	KEY STOCK 3/16" X 3/16" X 1 1/4"LGT	2
14	C-0003	CONVEYOR BELT CRES TOP 61 5/8" X 14" WITHDRAW 1 3/4"	1
15	S-0167	SMOOTH ROLLER DRIVEN	1
16	D-0183	CONVEYOR SUPPORT PLATE	1
17	Q-0052	MACH SCREW T.P. 1/4 X 1/2"	2
18	D-0112	PLATE FOR FRICTION FREE	1

Parts Diagram
FRAME ASSEMBLY
Model ECO-50



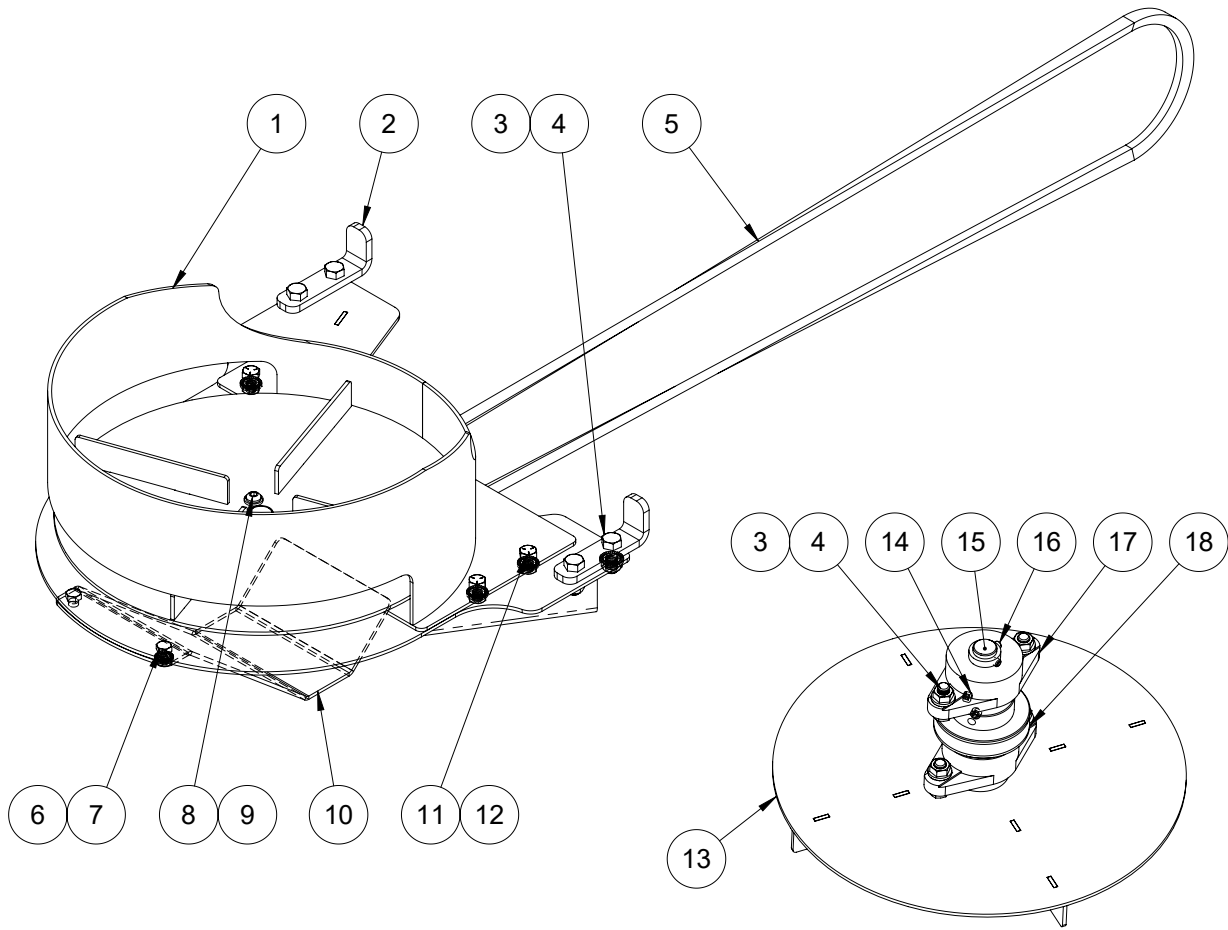
#	PART #	DESCRIPTION	QTY	#	PART #	DESCRIPTION	QTY
1	D-0125	CONVEYOR-SCRAPPER UPPER	1	22	S-0059	HANDLE-ECO-50	1
2	Q-0055	CARRIAGE BOLT 1/4-20 X 1/2"	2	23	U-0072	DRAW BAR ECO-50	1
3	Q-0040	SERRATED FLANGE HEX LOCKNUT 1/4-20	6	24	Q-0023	HEX BOLT 3/8-16 x 3"	2
4	D-0162	CONVEYOR-SCRAPPER LOWER	1	25	Q-0033	NYLOCK 3/8-16	2
5	D-0129	COVER PLATE-ECO50	1	26	C-0168	GRIP (RUBBER) ID 1" ECO-50	1
6	Q-0015	HEX BOLT 1/4-20 X 3/4"	4	27	S-0060	CLUTH ARM -ECO-50	1
7	Q-0009	FLAT WASHER 1/4"	2	28	Q-0054	SNAP RETAINING RING 3/8"	2
8	Q-0041	SERRATED FLANGE HEX LOCKNUT 3/8-16	8	29	U-0073	PIN CLUTCH ARM ECO-50	1
9	Q-0011	FLAT WASHER 3/8"	6	30	Q-0020	HEX BOLT 3/8-16 x 1 1/4"	1
10	Q-0019	HEX BOLT 3/8-16 x 1"	8	31	S-0039	CLUTCH FOR PROPULSION-SIMPLE CLEVIS ECO50	1
11	D-0109	DIFFERENTIAL SUPPORT BRACKET	1	32	Q-0062	HEX JAM NUT 1/2-13	1
12	S-0051	FRAME-ECO 50	1	33	C-0083	EXTENSION SPRING 3"	1
13	Q-0269	METAL SCREW HEX TECK 10 X 1/2"	4	34	S-0027	CONVEYOR CLUTCH ARM	1
14	D-0111	DEFLECTOR FOR BELT	1	35	S-0040	ATTACHMENT CLUTCH E-050	1
15	Q-0042	COTTER PIN 3/32" X 1 1/2"	2	36	U-0045	COPPER SPACER 1/2" X 1.275"	1
16	Q-0022	HEX BOLT 3/8-16 X 2"	4	37	Q-0025	NYLOCK 10-24	3
17	Q-0026-R	HEX NUT 3/8-16 RIGHT THREADED	5	38	Q-0039	ROUND HEAD SCREW 10-24 x 3/4"	3
18	U-0064	LONG ROD, LEFT THREADED ECO-50	1	39	U-0034	TENSIONER WHEEL	1
19	Q-0026-L	HEX NUT 3/8-16 LEFT THREADED	2	40	Q-0008	FENDER WASHER 1/2" X 2"	2
20	U-0048	ROD ADJUSTEMENT L & R TREADED	1	41	Q-0006	SNAP RETAINING RING 1/2"	2
21	U-0015	SHORT COMMON ROD	1				

Parts Diagram
DRIVE ASSEMBLY
Model ECO-50



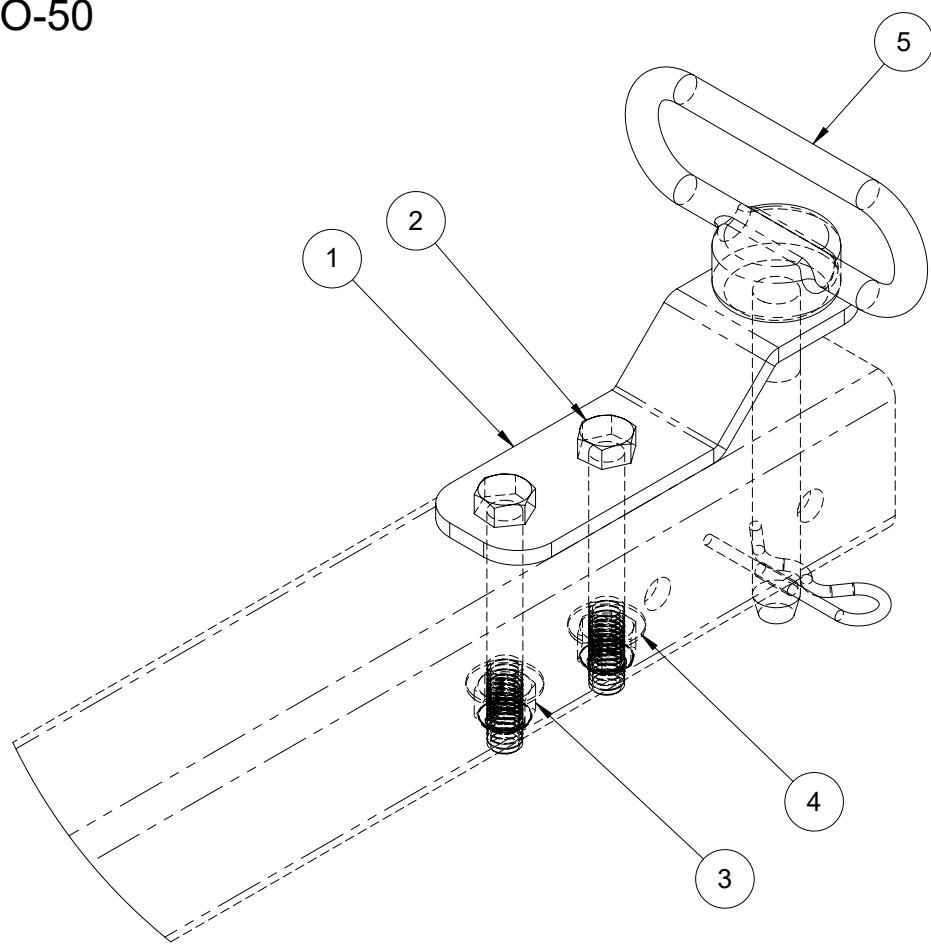
#	PART#	DESCRIPTION	Q'TY	#	PART#	DESCRIPTION	Q'TY
1	C-0015	CHAIN LINK HALF	1	19	Q-0036	SET SCREW 1/4-20 x 1/4"	9
2	C-0070	CHAINE 71 5/8"-ECO 50	1	20	C-0030	SPROCKET 14 TEETH	1
3	C-0048	PILLOW BLOCK 3/4	2	21	C-0007	DOUBLE GROOVE V-BELT PULLEY(TO CONVOYER) 2MA 25 3/4	1
4	Q-0044	HEX BOLT 3/8-16 X 1 3/4"	4	22	Q-0030	LINCH PIN 5/16 X1 3/4"	2
5	Q-0011	FLAT WASHER 3/8"	10	23	C-0035	WHEEL (TURF SAVER TIRE AND RIM) 16 X 7.50	2
6	Q-0041	SERRATED FLANGE HEX LOCKNUT 3/8-16	11	24	Q-0020	HEX BOLT 3/8-16 x 1 1/4"	4
7	D-0186	CHAIN TENSIONER-BRACKET-ECO-50	2	25	C-0047	PILLOW BLOCK 1"	2
8	Q-0033	NYLOCK 3/8-16	1	26	Q-0043	SERRATED FLANGE HEX LOCKNUT 5/16-18	4
9	C-0060	IDLER SPROCKET O.D. 2" FOR 10mm SHAFT	2	27	C-0029	SPROCKET 48 TEETH	1
10	Q-0050	HEX BOLT ZINC 3/8-16 X 2 1/4"	3	28	C-0004	DIFFERENTIAL	1
11	S-0009	RIGHT TREADED UPPER CLUTCH ROD ATTACHMENT	1	29	C-0010	FLANGE BEARING (SUPPORT DIFFERENTIAL)	2
12	Q-0026-R	HEX NUT 3/8-16 RIGHT THREADED	1	30	Q-0015	HEX BOLT 1/4-20 X 3/4"	5
13	U-0082	CHAIN TENSIONER-PIVOT SHAFT	1	31	Q-0040	SERRATED FLANGE HEX LOCKNUT 1/4-20	5
14	Q-0002	EXTERNAL RETAINING RING 5/8"	2	32	Q-0009	FLAT WASHER 1/4"	5
15	U-0011	KEY STOCK 3/16" X 3/16" X 1 1/4" LGT	3	33	C-0152(ECO50)	CONVEYOR (CLUTCH) BELT GARD	1
16	C-0155	SINGLE GROOVE V-BELT PULLEY(TO FRONT SPREADER) MA 53 3/4	1	34	Q-0029	LINCH PIN 1/4" X 1 3/4"	1
17	Q-0037	SET-SCREW 5/16-18 X 1/4"	6				
18	C-0046	NOTCHED V-BELT A28 (TO CONVEYOR)	2				

Parts Diagram
EJECTION PLATE ASSEMBLY
Model ECO-50



ITEM #	PART #	DESCRIPTION	Q'TY
1	S-0063	RETAINER RING	1
2	D-0168	ANGLE BRACKET/ ECO 050/150/250	2
3	Q-0041	SERRATED FLANGE HEX LOCKNUT 3/8-16	8
4	Q-0019	HEX BOLT 3/8-16 x 1"	8
5	C-0038	V-BELT-A86	1
6	Q-0040	SERRATED FLANGE HEX LOCKNUT 1/4-20	2
7	Q-0158	HEX BOLT 1/4-20 X 1/2"	2
8	Q-0053	BUTTON HEAD SOCKET CAP SCREW 5/16-18 X 1/2"	2
9	Q-0051	LOCK WASHER 5/16"	2
10	D-0019	FRONT SKID PLATE	1
11	Q-0159	HEX BOLT 5/16-18 X 3/4"	3
12	Q-0043	SERRATED FLANGE HEX LOCKNUT 5/16-18	3
13	S-0014	PLATE EJECTION	1
15	S-0015	PLATE EJECTION SHAFT	1
17	C-0009	FLANGE BEARING 3/4	2
18	C-0027	SINGLE GROOVE V-BELT PULLEY MA30-3/4	2

Parts Diagram
HITCH PIN
 Model ECO-50



ITEM #	PART #	DESCRIPTION	Q'TY
1	D-0124	HITCH PIN BRACKET - ECO 50	1
2	Q-0023	HEX BOLT 3/8-16 x 3"	2
3	Q-0033	NYLOCK 3/8-16	2
4	Q-0011	FLAT WASHER 3/8"	2
5	C-0082	HITCH PIN 1/2X3	1